

Prices

Data on energy price trends



- Long-time series from January 2005 to September 2022 -

Periodicity: monthly
Published on November 4th, 2022
Code number: 5619002221094

You may contact us at:
www.destatis.de/contact
Telefon: +49 (0) 611 / 75 24 05

© Statistisches Bundesamt (Destatis), 2022

Reproduction and distribution, also of parts, are permitted provided that the source is mentioned

Content

Text

1. Introductory Note
2. Statistics included
 - 2.1. Statistics of import prices
 - 2.2. Statistics of producer prices for industrial products (domestic sales)
 - 2.3. Statistics of consumer prices
 - 2.4. Statistics of export prices
 - 2.5. Eurostat energy price statistics
 - 2.6. Energy statistics (excluding mineral oil)
 - 2.7. Index of producer prices for forestry products
3. Energy types shown
 - 3.1. Hard coal
 - 3.2. Lignite
 - 3.3. Mineral oil
 - 3.4. Natural gas
 - 3.5. Petrol
 - 3.6. Diesel fuel
 - 3.7. Light heating oil
 - 3.8. Heavy heating oil
 - 3.9. Liquefied gas
 - 3.10. Electricity
 - 3.11. Remote heat
 - 3.12. Logging products for energy production

Tables

4. charts
 - 4.1. Import price index for mineral oil, consumer price indices for supergrade petrol, Diesel fuel, and light heating oil
 - 4.2. Import prices index for natural gas, producer price index for light heating oil, producer price index for natural gas when delivered to the industry, consumer price index for natural gas
 - 4.3. Producer price indices for electricity when delivered to commercial plants and special contract customers, consumer price index for electricity
5. Prices and price indices by energy types
 - 5.1. Hard coal and lignite (indices)
 - 5.2. Mineral oil (indices)
 - 5.3. Natural gas
 - 5.3.1. Indices
 - 5.3.2. Prices for household customers
 - 5.3.3. Prices for industrial customers
 - 5.4. Petrol
 - 5.4.1. Indices
 - 5.4.2. Prices
 - 5.5. Diesel fuel
 - 5.5.1. Indices
 - 5.5.2. Prices
 - 5.6. Light heating oil
 - 5.6.1. Indices
 - 5.6.2. Prices for customers
 - 5.6.3. Prices for wholesale
 - 5.7. Liquefied gas (indices)
 - 5.8. Electricity
 - 5.8.1. Indices
 - 5.8.2. Prices for household customers
 - 5.8.3. Prices for industrial customers
 - 5.9. Remote heat
 - 5.10. Woods products for energy production

Annex

6. Overview of tax rates by energy types
7. Links to external data sources
8. Overview pricing of CO₂

Explanation of symbols

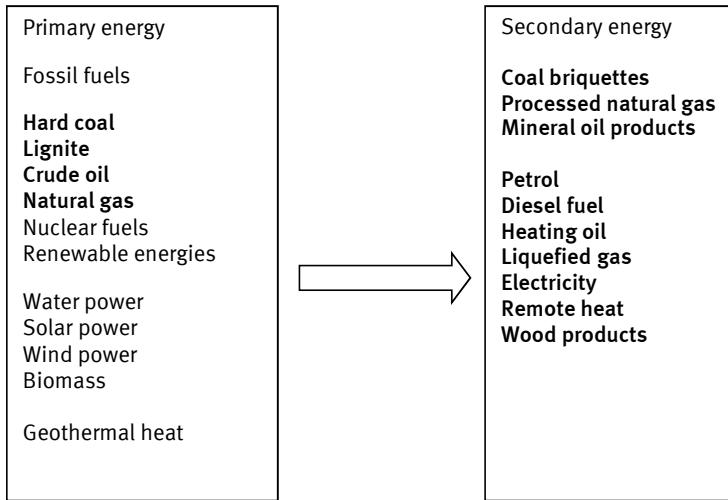
r	=	revised figure
p	=	provisional figure
-	=	no figures or magnitude zero
...	=	data will be available later
.	=	numerical value unknown or not to be disclosed
	=	fundamental change within a series affecting comparisons over time
—	=	fundamental change within a series affecting comparisons over time

Abbreviations

T (t)	=	tonne
L (l)	=	litre
HL (hl)	=	hectolitre
KWH (KWh)	=	kilowatt hour
MWH (MWh)	=	megawatt hour
GJ	=	gigajoule
TJ	=	terajoule
OVU	=	town gas utility (OVU)
EEG	=	law on renewable energy sources
KWK	=	combined heat and power
SKE	=	coal equivalent
b	=	barrel
EBV	=	oil storage association
EUA	=	European Union Allowances
BImSchV	=	Federal Immission Control Act
AA	=	Annual average
()	=	information value is limited as from statistical point of view the numerical value is not absolutely reliable

1. Introductory note

Energy (Greek: *energeia* = effectiveness) is generally defined as the ability to perform work. In physical terms, energy cannot be produced or destroyed. Instead, every energy-relevant process involves the transformation of one energy form into another. Energy occurs in two basic forms: Primary and secondary energy. Primary energy sources occur direct in nature and have not been transformed yet technologically. Through extraction, processing and transformation, secondary energy (or final energy) is generated, which can be “consumed” at the place of energy use.



Price trend data are available in this publication on the energy types marked above.

The price indices of the Federal Statistical Office for various types of energy and energy carriers at different economic levels make it possible to track price developments from production and import to consumption by the end user. The price development of energy is the focus of public attention, especially in connection with the energy transition.

This publication combines energy data from various price statistics of the Federal Statistical Office and of the Statistical Office of the EU (Eurostat). The main goal of German official price statistics is to produce price indices showing the price changes over time. Information on price levels can be given only for selected mineral oil products and for electricity and natural gas as average prices over a half-year for various customer groups in a European comparison.

Generally, all price indices produced in the German system of price statistics are based on the same methodical principles. Price indices are always calculated applying the Laspeyres formula, which means that price changes for selected goods of a commodity basket are weighted using fixed quantities of a base year. The current base year is 2015. There are differences regarding especially the classifications used. Indices of import, producer and export prices are calculated according to the national Product Classification for Production Statistics, 2009 edition (Güterverzeichnis für Produktionsstatistiken – GP), whereas the consumer price indices are based on the Classification of Individual Consumption by Purpose (COICOP).

The different treatment of taxes must definitely be taken into account, too. The table below shows whether tax changes are included in the various price indices:

Statistics	Excise duties: Mineral oil tax (incl. ecological tax), natural gas tax, electricity tax	Charges similar to taxes, e.g. in accordance to Renewable Energies Act	Value-added tax
Import prices	no	no	no
Producer prices	yes	yes	no
Consumer prices	yes	yes	yes
Export prices	no	no	no

An overview of the current excise duties and on their development over time is contained in the annex and can also be obtained from the Federal Ministry of Finance at:

http://www.zoll.de/DE/Fachthemen/Steuern/Verbrauchssteuern/verbrauchssteuern_node.html

The development of the oil storage contribution rates is available from the oil storage association:

www.ebv-oil.org/ → Beitragssätze

A brief description is given below both of the statistics included in this publication and of the energy types shown. For detailed descriptions of the various statistics please refer to the specialised publications (Fachserie 17) and to the quality reports which may be downloaded using the following way:

www.destatis.de › Methoden → Qualität → Qualitätsberichte → Wirtschaft → Preise

www.destatis.de › Themen → Wirtschaft → Preise

All available information on the different price statistics may be obtained through:

www.destatis.de › Themen → Wirtschaft → Preise

The tables in this publication show the major price indices from January 2005 on for all energy sources selected. For longer time series, the publications on the individual statistics are available within the special publications

www.destatis.de › Themen → Wirtschaft → Preise

or through the online database GENESIS-Online

<https://www-genesis.destatis.de/genesis/online>.

Apart from the publications of the Federal Statistical Office and of Eurostat, there is a variety of other publications of different institutions on the issue of energy prices. The annex lists important sources – by energy types – providing information complementing official price indices. However, that list has been limited to sources of ministries, authorities and important associations. The multitude of private and commercial data providers have not been included.

2. Statistics included

2.1 Statistics of import prices

The import price indices produced monthly measure the price development of commodities imported to Germany. Germany purchases most of the primary energy sources (especially hard coal, mineral oil and natural gas) from abroad. Imports of refined products (motor fuels and heating oil) are considerable, too. The results of import price statistics are published in Fachserie 17, Reihe 8.1. That Fachserie can be obtained through the website of the Federal Statistical Office:

www.destatis.de > Themen → Wirtschaft → Preise → Ein- und Ausfuhrpreisindex

2.2 Statistics of producer prices for industrial products (domestic sales)

The producer price indices calculated monthly show the price development of products produced and sold in Germany. What is important on the energy sector apart from the domestic primary energy (hard coal, lignite, mineral oil, natural gas) is especially the production of mineral oil products. Also, domestic sales of natural gas, electricity and remote heat are shown in terms of price indices in producer price statistics. The results of producer price statistics are published in Fachserie 17, Reihe 2. That Fachserie can be obtained through the website of the Federal Statistical Office:

www.destatis.de > Themen → Wirtschaft → Preise → Erzeugerpreisindex gewerblicher Produkte

2.3 Statistics of consumer prices

Consumer price indices measure the price development at the level of private consumption on a monthly basis. In that context, price indices are also calculated for all energy sources demanded by households: Coal, motor fuels, heating oil, electricity, natural gas, remote heat. The results of consumer price statistics are published in Fachserie 17, Reihe 7. That Fachserie can be obtained through the website of the Federal Statistical Office:

www.destatis.de > Themen → Wirtschaft → Preise → Verbraucherpreisindex

2.4 Statistics of export prices

Export price indices, which are also calculated every month, show the price development for commodities exported from Germany. What is relevant for energy is especially exports of mineral oil products. The results of export price statistics are published in Fachserie 17, Reihe 8.2. That Fachserie can be obtained through the website of the Federal Statistical Office:

www.destatis.de > Themen → Wirtschaft → Preise → Ein- und Ausfuhrpreisindex

2.5 Eurostat energy price statistics

The Statistical Office of the European Union publishes prices for electric power and natural gas for the first and second half of each year, which are surveyed by the national statistical offices. These are end-user prices for defined consumption groups of both private households and non-households, such as companies or public authorities. For electricity, 5 consumption groups are defined for private households and 7 for non-households; for gas, 3 and 6 are defined accordingly. Prices are shown separately in each case including all taxes, excluding VAT and excluding all taxes. Detailed results of the statistics for all EU member states as well as a detailed description of the methods can be found on the Eurostat website. The German results and description of the methods can also be found on the website of the Federal Statistical Office:

<https://ec.europa.eu/eurostat/data/database>

www.destatis.de > Themen → Wirtschaft → Preise → Verbraucherpreisindex

2.6 Energy statistics (excluding mineral oil)

The Federal Statistical Office publishes annual data on the volume of electricity, heat and gas in Fachserie 4, Reihe 6.4 "Stromerzeugungsanlagen der Betriebe im Bergbau und im Verarbeitenden Gewerbe". That Fachserie can be obtained through the website of the Federal Statistical Office:

www.destatis.de > Themen → Branchen und Unternehmen → Energie → Erzeugung → Publikationen

2.7 Index of producer prices for products of logging

The indices of producer prices for products of logging reflect the monthly price trends in domestic sales of raw timber of domestic origin (from state forests). The results of producer prices for products of logging are published in Fachserie 17, Reihe 1. That Fachserie can be obtained through the website of the Federal Statistical Office:

www.destatis.de > Themen → Wirtschaft → Preise → Preisindex für Land- und Forstwirtschaft

3. Energy types presented

3.1 Hard coal

In 2018, hard coal mining in Germany ended. A good 6% of the hard coal used in Germany was mined in Germany and just under 94% was imported from abroad. Hard coal is mainly used as steam coal in power plants or combined heat and power plants and as coking coal in steel production. For private consumers, hard coal plays only a minor role as a fuel for heat generation.

Volume and use of hard coal

Volume, 2018 (quantitative structure in %)	
Domestic extraction	6
Import, of which	94
Russia	44
USA/Canada	24
Australia	13
Colombia	6
Netherlands	3
Other origins	4

Use, 2018 (quantitative structure in %)	
Electricity and heat production	56
Steel industry	42
Other uses	2

Source: Statistik der Kohlenwirtschaft E. V.

3.2 Lignite

Germany is the world's largest lignite producer (over 16% of world production in 2018). Imports and exports do not play a role for Germany. German lignite is mainly used in electricity generation: 16.2 of domestic electricity generation in 2020 was based on lignite.

Volume and use of lignite

Volume, 2018 (quantitative structure in %)	
Rheinland coalfield	52
Lausitz coalfield	37
Central German coalfield	12

Use, 2018 (quantitative structure in %)	
Electricity and thermal power stations	90
Other uses	10

Sources: Statistik der Kohlenwirtschaft e. V.

Bundesanstalt für Geowissenschaften und Rohstoffe (Energiestudie)

3.3 Mineral oil

Nearly all the crude oil used in Germany is imported; domestic extraction covers only about 2 % of demand. The major areas of origin in 2018 were Russia (about 35 %), Europe (about 12 %), Africa (about 18 %) and the Middle East (about 6 %). Crude oil is processed almost only in refineries to obtain various mineral oil products (gases, petrols, middle distillates, heavy heating oil as well as parent substances for the chemical industry).

Volume and use of crude oil

Volume, 2018 (quantitative structure in %)	
Domestic extraction	2
Imports, of which	98
Russia	35
Africa	18
Remaining Europe among Norway	12
Great Britain	8
Middle East	6
Other areas of origin	19

Processing, 2018 (quantitative structure in %)	
Diesel fuel	35
Petrol	17
Light heating oil	12
Aviation petrol	10
Liquefied gas	3
Heavy heating oil	2
Bitumen	2
Other products	19

Source: Mineralölwirtschaftsverband e. V.

3.4 Natural gas

About 95 % of the German natural gas volume comes from imports. Major countries of origin are Russia, Norway and the Netherlands. About 5 % is extracted in Germany. About 26 % of the natural gas volume is exported.

In addition to the importers, production companies and utilities, the network operators, who transport the natural gas via long-distance networks (transmission system operator) and distribution networks (regional), are the most important players on the German gas market.

The prices to be paid by final consumers, in simplified terms, consist of the following components:

- Extraction price or import price (price free at border)
- Costs for transport to withdrawal points and to the consumer (network charges)
- Distribution costs
- Energy tax
- national carbon pricing
- Value added tax, where applicable

Data on actual price structures, which differ depending on the type of customer and quantity purchased, are not available at the Federal Statistical Office.

Long-term supply contracts concluded by natural gas importers with the major supplier countries are linked in part to the price development of light heating oil and heavy heating oil (gas-oil price link). That direct linkage of gas prices to oil prices is in part also used for contracts between gas suppliers and industrial customers or power stations. For small consumers (especially households), the gas-oil price link has only an indirect effect, i.e. there is no automatic linking. The final suppliers, however, adjust their price systems in function of the development of their purchase prices, which are often directly linked to the oil price. However, the price changes here are generally smaller than the oil price changes as the cost share of gas in the final consumer price for households is just about 30%. The remaining 70% consist of transport and distribution costs, taxes and profit margins.

Volume and use of natural gas

Volume, 2018 (quantitative structure in %)	
Domestic extraction	5
Imports, of which	95

Source: Federal Office of Economics and Export Control

Use, 2018 (quantitative structure in %)	
Industry, incl. power plants	40
Households	23
Other domestic customers	11
Exports	26

Source: Federal Statistical Office

3.5 Petrol

Petrols are crude oil distillates boiling between 35°C and 210°C. Major petrols are motor petrols (especially regular and supergrade petrol), aviation petrols and raw petrols as parent substances for the petrochemical industry. As regards the most important type of petrol, i.e. motor petrols, most of the quantities available in Germany in 2018 was produced in German refineries (about 71 %), while some 29 % was imported. About 89 % of the total volume was sold within Germany, while the remaining 11 % was exported. Motor petrol is used almost only as motor fuel in road transport. Distribution to final consumers is done through the filling station networks of the oil companies or through independent filling stations, in part via oil wholesalers. The petrol price development strongly depends on the crude oil price dynamics on the world markets. Another relevant factor for final consumer prices in Germany is the development of mineral oil tax rates.

Volume and use of petrol

Volume, 2018 (quantitative structure in %)	
Domestic production, of which	71
Motor petrol	42
Raw petrol	18
Aviation petrol	11
Imports, of which	29
Raw petrol	12
Aviation petrol	14
Motor petrol	3

Source: Federal Office of Economics and Export Control

Sale, 2018 (quantitative structure in %)	
Domestic consumption, of which	89
Motor petrol	40
Raw petrol	26
Aviation petrol	23
Exports, of which	11
Motor petrol	7
Raw petrol	1
Aviation petrol	3

3.6 Diesel fuel

Diesel fuel belongs to the middle distillates (boiling point between 200°C and 360°C). About 68 % of the Diesel fuel quantity available in Germany in 2018 came from German refineries, while just under 32 % was imported. Over 84 % of the quantity was sold in Germany, and about 16 % was exported. Diesel fuel producers sell their output in Germany to oil wholesalers and through the filling station networks, although a large part is sold direct to large consumers. The price development for Diesel fuel depends on similar factors as that of petrol.

Volume and use of Diesel fuel

Volume, 2018 (quantitative structure in %)	
Domestic production	68
Imports	32

Source: Federal Office of Economics and Export Control

Use, 2018 (quantitative structure in %)	
Domestic consumption, of which	84
Exports	16

Source: Mineralölwirtschaftsverband e. V.

3.7 Light heating oil

Light heating oil, too, belongs to the middle distillates and, in chemical terms, is nearly identical to Diesel fuel. In 2018, about 78 % of the domestic volume came from domestic production and some 22 % was imported. Approximately 93 % of light heating oil supplied in Germany remains in the domestic territory, only about 7% is exported. The largest part of light heating oil is used for heat production in local combustion installations. In electricity production, light heating oil is no longer very important. The price development here depends on the same factors as for any other mineral oil products. The mineral oil tax rates applicable to light heating oil are lower than for Diesel fuel.

Volume and use of light heating oil

Volume, 2018 (quantitative structure in %)	
Domestic production	78
Imports, of which	22
Belgium/Luxembourg	9
Netherlands	7

Use, 2018 (quantitative structure in %)	
Domestic consumption	93
Exports	7

Source: Federal Office of Economics and Export Control
Mineralölwirtschaftsverband e. V.

3.8 Heavy heating oil

Heavy heating oil is a residual obtained when distilling so-called light products (gases, petrols, middle distillates) in crude-oil refinement. The main domestic customer is the industry, which uses heavy heating oil mainly for the production of electricity and heat supply.

Volume and use of heavy heating oil

Volume, 2018 (quantitative structure in %)	
Domestic production	96
Imports	4

Use, 2018 (quantitative structure in %)	
Domestic consumption	55
Exports	45

Source: Federal Office of Economics and Export Control

3.9 Liquefied gas

Liquefied gases are light hydrocarbons (propane, butane) kept liquid by high pressure. They are obtained during mineral oil refinement and natural gas extraction. Most of the German liquefied gas volume in 2018 was produced in domestic refineries. Within Germany, liquefied gas is sold mainly to the industry and to households (the latter use is mainly for heating). About 4 % of the domestic volume is exported.

Volume and use of liquefied gas

Volume, 2018 (quantitative structure in %)	
Domestic production	72
Imports	28

Source: Federal Office of Economics and Export Control

Use, 2018 (quantitative structure in %)	
Domestic consumption, of which	96
Industry	52
Households	30
Other consumers	14
Exports	4

Source: Federal Statistical Office

3.10 Electricity

The most important energy sources for electricity generation in Germany are renewable energies (especially wind power and photovoltaics), lignite, natural gas, nuclear fuels, hard coal and, to a lesser extent, mineral oil. In 2018, electricity imports corresponded to about 4% of domestic electricity generation, while at the same time about 12% of electricity generation was exported.

In addition to the electricity producers and utilities, the grid operators, who transport electricity via transmission grids (supraregional) and distribution grids (regional), are the most important players on the German electricity market.

The final selling prices of electricity are composed of the following elements:

- production costs
- network charges
- sales costs
- excise duties and other tax charges (electricity tax, licence fees, charges according to the laws on renewable energies and combined heat and power), possibly value-added tax
- costs in the context of emissions trading
- profits of the enterprises

Over 40 % of the electricity available was supplied to the industry in 2018, about 21 % to households. Final consumers can be divided into two customer groups as regards the type of their delivery contracts: Regular customers (delivery according to fixed rates of a price system) and special contract customers (prices are negotiated between suppliers and customers irrespective of the price system). While most households and smaller commercial clients are regular customers, large commercial clients usually are special contract customers.

Volume and use of electricity

Volume, 2018 (quantitative structure in %)	
Domestic production, of which from	96
Renewable energies	34
Lignite	21
Hard coal	12
Nuclear fuels	12
Natural gas	12
Other sources	5
Imports	4

Source: Federal Statistical Office
BDEW

Use, 2018 (quantitative structure in %)	
Domestic consumption, of which	86
Mining and manufacturing	40
Households	21
Commercial and industrial	13
Other	12
Exports	14

3.11 Remote heat

Remote heat is produced in large heating power stations, usually on the basis of coal and natural gas, and is supplied through pipeline systems to energy suppliers or direct to final consumers. Customers are both commercial users and households. In the heating of dwellings, remote heat has a share of over 14 % .

Volume and use of remote heat

Production in 2018 (quantitative structure in %)	
Natural gas	40
Hard coal	21
Lignite	7
Mineral oil	1
Waste and others	31

Source: BMWi

Use, 2018 (quantitative structure in %)	
Industry	49
Households	45
Other consumers	6

3.12 Logging products for energy production

In Germany wood fuel had a share of 15,2 % of logging of raw timber. As wood fuel is becoming more attractive more energy companies produce energy by using wood.

Chart 4.1

4.1 Consumer price indices for supergrade petrol, diesel fuel and heating oil and import price indices of mineral oil 2015 = 100

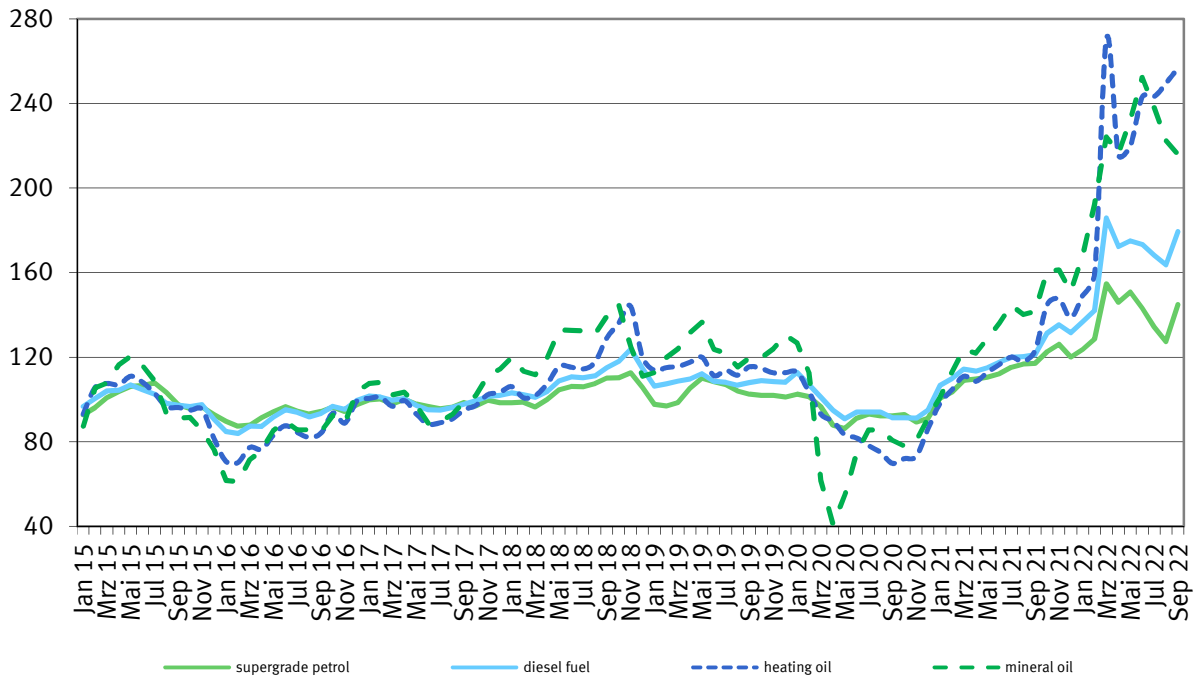


Chart 4.2

4.2 Import price index for natural gas, producer price index for light heating oil, producer price index for natural gas when delivered to the industry and consumer price index for natural gas excl. share in the costs
2015 = 100

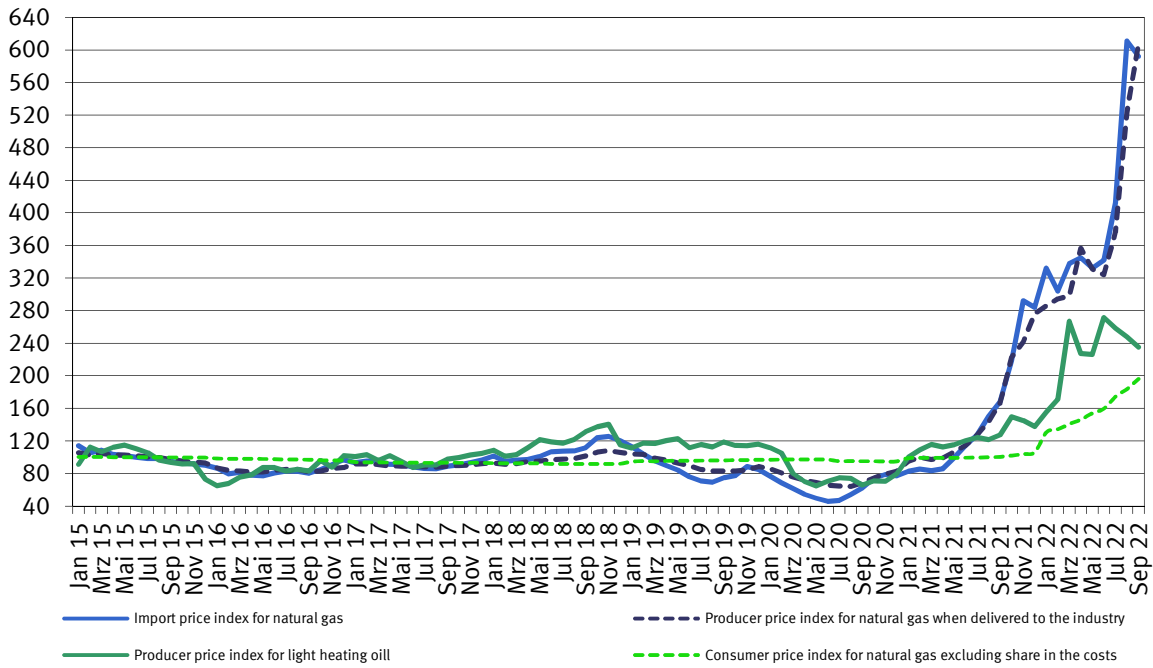
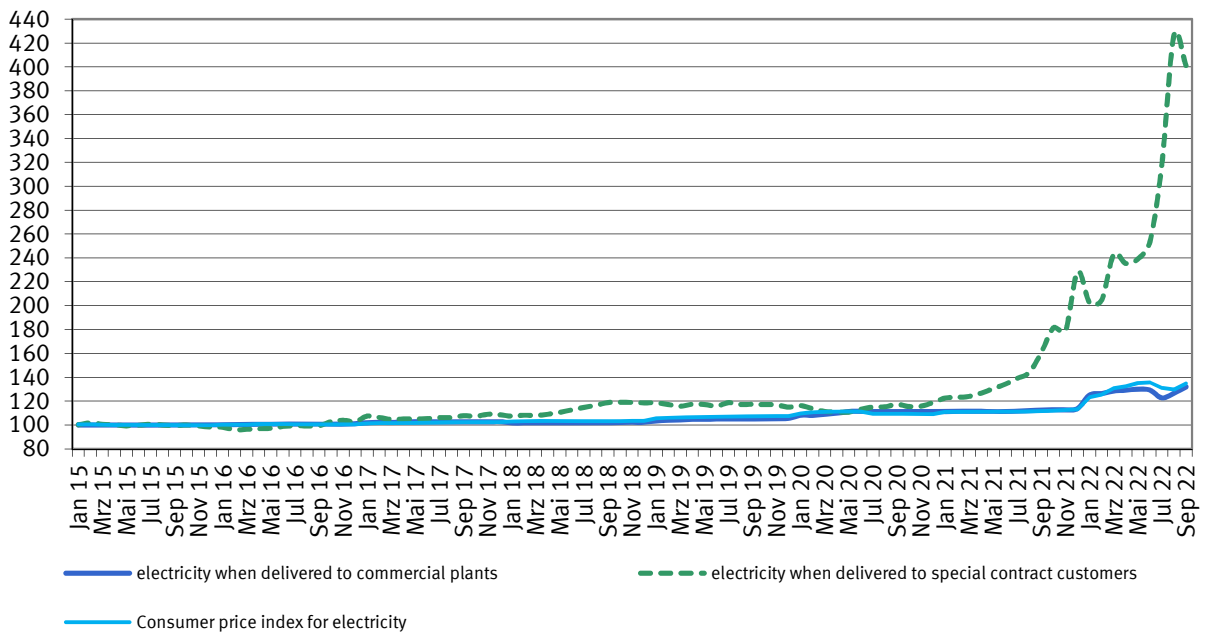


Chart 4.3

4.3 Producer price indices for electricity when delivered to commercial plants, special contract customers and consumer price index for electricity 2015 = 100



5.1 Hard coal and lignite

reporting year	reporting month												yearly average
	Jan	Feb	Mar	Apr	May	Jun	Jul	Aug	Sep	Oct	Nov	Dec	
Import price index													
2015 = 100													
GP09-051 Hard coal													
2005 ...	67,2	67,1	64,9	65,5	65,0	66,2	66,1	64,0	63,8	67,1	74,7	73,5	67,1
2006 ...	71,9	73,8	76,1	75,4	72,3	72,5	76,5	77,8	77,8	80,4	78,0	75,2	75,6
2007 ...	76,8	77,0	77,8	76,7	76,3	78,6	78,0	80,7	84,1	89,1	90,7	93,3	81,6
2008 ...	96,8	101,8	97,9	98,4	105,6	123,0	135,4	150,2	167,3	163,0	155,3	136,2	127,6
2009 ...	146,8	150,4	144,2	139,8	137,4	135,0	127,7	128,7	113,8	111,4	108,5	107,0	129,2
2010 ...	103,7	104,1	104,8	108,0	118,3	123,8	124,0	121,7	120,8	118,0	123,5	132,4	116,9
2011 ...	140,1	138,7	136,8	133,3	133,9	133,5	140,0	138,7	140,1	139,4	139,6	139,5	137,8
2012 ...	139,7	134,7	132,0	131,3	129,3	130,0	130,6	129,2	124,9	120,3	120,5	119,3	128,5
2013 ...	116,0	112,6	112,6	111,8	111,5	109,1	108,1	106,2	106,6	105,8	104,9	104,4	109,1
2014 ...	103,4	101,1	100,0	99,8	97,0	97,6	97,5	98,9	101,0	101,5	102,7	101,8	100,2
2015 ...	100,9	104,5	107,8	107,8	104,0	100,9	102,2	96,3	94,3	93,7	95,8	91,9	100,0
2016 ...	84,3	82,3	82,1	81,2	81,9	85,8	90,6	93,7	95,9	113,5	131,4	147,6	97,5
2017 ...	146,3	148,3	145,8	143,9	134,8	140,2	142,4	136,2	136,6	141,4	139,1	140,1	141,3
2018 ...	139,6	136,7	136,1	139,3	142,7	143,2	148,7	146,2	147,4	151,2	148,2	150,3	144,1
2019 ...	144,5	140,3	136,5	128,2	128,0	120,8	126,1	117,3	121,2	119,8	110,5	107,1	125,0
2020 ...	103,6	103,2	101,5	97,4	93,4	94,2	93,9	87,0	90,7	92,3	93,6	99,8	95,9
2021 ...	101,4	104,5	107,9	112,3	118,5	136,1	161,1	189,4	213,8	289,1	237,5	253,8	168,8
2022 ...	264,8	304,0	439,1	473,9	512,6	508,0	581,3	553,3	488,3				
2023 ...													
Producer price index													
2015 = 100													
GP09-052 Lignite and lignite briquettes													
2005 ...	78,8	78,8	78,8	78,8	77,3	78,8	78,8	78,8	78,8	79,9	79,9	79,9	79,0
2006 ...	81,9	81,9	81,9	82,3	80,7	80,7	80,7	80,7	82,3	82,3	82,3	82,3	81,7
2007 ...	85,3	85,3	85,3	83,6	83,6	83,6	83,6	83,6	83,6	85,3	85,3	85,3	84,5
2008 ...	85,7	85,7	85,7	84,1	84,1	84,1	84,1	80,8	80,8	79,1	79,1	79,1	82,7
2009 ...	84,1	86,7	87,3	86,5	87,4	88,0	87,5	87,3	88,4	87,5	87,5	87,5	87,1
2010 ...	88,3	90,1	90,6	88,6	89,0	90,3	89,0	89,0	89,0	91,4	91,3	91,3	89,8
2011 ...	94,2	96,9	99,8	98,4	98,4	98,4	98,4	98,4	98,4	101,2	101,2	101,2	98,7
2012 ...	101,2	101,2	101,2	101,2	101,2	101,2	101,2	101,2	101,2	102,6	102,6	102,6	101,6
2013 ...	102,5	102,5	102,5	102,5	102,5	102,5	102,5	102,5	102,5	102,5	102,5	102,5	102,5
2014 ...	103,9	103,0	102,2	101,4	100,7	100,7	100,8	100,8	100,8	101,3	101,3	101,3	101,5
2015 ...	99,9	99,9	99,9	99,9	99,9	99,9	100,5	100,5	99,9	99,9	99,9	99,9	100,0
2016 ...	99,2	99,2	99,6	99,6	99,6	99,5	99,5	99,5	99,5	99,5	99,5	99,5	99,5
2017 ...	99,4	97,1	96,8	96,8	96,8	96,8	96,8	96,8	96,8	96,6	96,6	96,6	97,0
2018 ...	97,3	97,3	98,9	98,4	98,4	98,4	98,3	98,3	98,1	98,1	98,1	98,1	98,1
2019 ...	99,7	99,7	100,1	104,7	104,7	104,7	104,7	104,7	104,7	104,3	104,3	104,3	103,4
2020 ...	105,0	105,0	105,0	109,8	100,7	100,7	100,7	100,7	105,2	105,2	106,9	108,3	104,4
2021 ...	103,9	103,9	103,9	106,5	106,5	106,5	112,6	112,6	112,6	104,3	104,2	105,7	106,9
2022 ...	128,3	115,5	118,9	109,2	108,0	106,2	106,6	106,7	107,3				
2023 ...													

5.3.1 Natural gas

reporting year	reporting month												yearly average
	Jan	Feb	Mar	Apr	May	Jun	Jul	Aug	Sep	Oct	Nov	Dec	
Import price index													
2015 = 100													
GP09-062 Natural gas													
2005 ...	71,1	71,6	71,3	73,9	75,4	76,3	80,0	81,3	84,2	91,6	94,0	96,0	80,6
2006 ...	102,8	103,5	104,8	107,1	108,2	108,8	111,2	110,7	111,9	112,5	112,1	110,6	108,7
2007 ...	107,7	105,9	102,3	95,8	95,8	95,5	95,0	97,3	97,3	103,5	105,6	109,1	100,9
2008 ...	116,1	118,9	121,7	128,4	130,9	136,2	146,3	151,5	157,1	165,8	164,5	160,8	141,5
2009 ...	148,4	140,4	131,4	111,4	102,4	97,2	89,5	87,9	87,7	90,7	90,3	93,1	105,9
2010 ...	95,9	99,0	100,7	102,6	106,1	111,1	115,9	118,6	114,8	119,2	119,5	121,9	110,4
2011 ...	124,3	126,9	128,7	132,9	137,1	136,5	141,6	140,9	135,1	150,8	147,9	150,1	137,7
2012 ...	151,0	150,1	152,1	153,7	153,6	152,0	141,4	140,5	134,1	136,3	142,4	143,0	145,9
2013 ...	142,1	140,4	140,7	141,9	136,8	136,0	130,5	130,4	127,6	130,5	131,4	131,9	135,0
2014 ...	132,2	131,4	125,9	119,8	114,2	110,7	104,0	101,1	105,5	116,9	118,1	117,7	116,5
2015 ...	114,2	105,6	108,5	103,5	102,1	99,9	98,5	98,3	94,8	92,9	91,6	90,0	100,0
2016 ...	86,6	79,7	81,6	77,9	77,3	80,6	83,0	82,8	80,2	85,1	90,8	97,0	83,6
2017 ...	93,3	95,4	95,7	91,2	90,8	88,1	86,4	85,9	88,9	90,7	93,2	96,6	91,4
2018 ...	101,4	94,8	96,6	97,3	100,6	106,7	107,3	107,7	111,7	124,1	125,7	120,4	107,9
2019 ...	112,9	104,1	95,7	89,6	84,1	76,2	70,8	69,2	75,0	77,6	88,6	85,1	85,7
2020 ...	76,6	68,7	61,5	54,5	49,7	45,8	47,1	54,2	62,2	74,2	78,8	77,2	62,5
2021 ...	82,5	85,3	83,5	85,9	99,0	114,5	127,4	150,4	168,3	218,1	292,3	283,7	149,2
2022 ...	332,2	304,1	337,6	344,6	332,2	342,2	412,3	611,1	592,5				
2023 ...													
Producer price index													
2015 = 100													
GP09-3522 22 Natural gas, when supplied to trade and small industries													
2005 ...	72,1	72,4	72,9	73,7	73,7	73,8	75,3	76,9	77,6	82,3	82,5	82,6	76,3
2006 ...	89,3	89,8	89,8	90,5	90,9	91,0	91,4	91,4	91,8	94,7	95,2	95,4	91,8
2007 ...	95,3	95,2	95,2	92,0	91,4	91,2	90,2	90,2	90,2	90,4	90,3	90,4	91,8
2008 ...	92,8	93,6	94,0	95,5	95,9	96,2	98,0	99,5	102,9	111,4	112,7	113,4	100,5
2009 ...	114,0	113,6	111,2	100,8	99,0	97,5	92,6	92,5	92,2	88,4	87,7	87,5	98,1
2010 ...	88,0	88,0	88,0	88,4	88,6	88,5	88,5	88,8	89,3	89,7	90,3	90,5	88,9
2011 ...	90,9	90,7	90,6	91,2	91,2	91,3	92,0	92,6	92,9	95,9	96,4	96,9	92,7
2012 ...	97,6	97,6	97,9	98,4	98,4	98,4	98,6	98,9	99,3	100,0	100,0	100,2	98,8
2013 ...	101,5	101,6	101,6	101,9	101,9	102,0	101,9	102,1	102,1	101,9	102,1	102,1	101,9
2014 ...	102,2	102,3	102,2	102,1	102,1	102,1	102,0	101,9	101,9	101,6	101,6	101,5	102,0
2015 ...	101,2	101,1	100,9	100,6	100,6	100,6	99,7	99,6	99,6	99,0	98,8	98,5	100,0
2016 ...	96,6	96,5	96,4	95,9	95,8	94,8	94,4	94,1	93,9	92,9	92,9	92,6	94,7
2017 ...	91,2	91,0	91,0	91,1	91,1	91,1	91,3	91,3	91,2	91,2	91,2	91,2	91,2
2018 ...	90,2	90,1	90,2	90,8	90,8	90,8	91,1	91,1	91,1	91,8	91,6	91,8	91,0
2019 ...	94,3	94,5	94,6	95,2	95,2	95,1	95,2	95,4	95,6	95,4	95,5	95,3	95,1
2020 ...	94,7	94,0	93,8	93,6	93,4	93,4	92,8	92,7	92,8	92,5	92,6	92,8	93,3
2021 ...	95,6	96,5	97,8	98,3	98,4	98,8	99,6	100,5	101,5	106,1	115,7	115,7	102,0
2022 ...	147,6	147,2	159,8	164,0	165,6	169,3	175,2	191,9	214,2				
2023 ...													
GP09-3522 23 Natural gas, when supplied to industry													
2005 ...	60,1	60,8	60,9	64,2	65,0	65,0	66,3	66,7	66,9	70,8	71,5	71,8	65,8
2006 ...	77,0	77,4	78,3	84,6	84,9	85,8	86,3	86,5	86,5	89,7	90,0	90,3	84,8
2007 ...	89,8	89,7	89,2	85,1	84,9	84,5	81,1	81,3	81,2	82,0	82,4	83,3	84,5
2008 ...	87,3	87,8	88,5	94,2	94,8	95,9	101,3	102,4	103,3	111,1	112,4	114,4	99,5
2009 ...	114,3	114,0	112,8	98,2	96,9	94,7	83,3	83,6	83,4	78,9	78,8	79,4	93,2
2010 ...	81,5	82,5	82,3	84,6	84,4	84,9	88,0	88,5	88,5	91,8	92,4	92,5	86,8
2011 ...	93,7	93,9	94,0	95,9	96,3	96,3	101,1	102,0	101,8	107,7	108,3	108,4	100,0
2012 ...	109,9	110,1	110,3	113,1	113,4	113,2	114,3	114,5	114,8	115,6	115,5	115,1	113,3
2013 ...	115,0	115,0	115,0	114,0	114,0	113,9	112,8	112,3	112,3	111,3	110,8	110,7	113,1
2014 ...	110,3	109,9	109,6	109,0	108,5	108,0	107,4	107,0	107,4	107,5	107,7	107,2	108,3
2015 ...	105,4	102,6	104,8	102,6	102,9	101,8	100,4	99,7	97,4	95,4	94,1	92,8	100,0
2016 ...	87,0	83,7	83,0	82,0	81,9	83,8	84,9	84,9	82,1	83,1	86,3	87,5	84,2
2017 ...	91,6	91,8	90,8	89,2	89,0	88,5	88,1	87,9	89,1	89,7	90,3	92,2	89,9
2018 ...	93,1	91,3	92,2	94,7	95,2	96,8	97,7	98,5	101,4	106,2	108,1	105,9	98,4
2019 ...	104,1	103,4	98,8	96,4	92,8	89,2	85,2	83,1	83,2	83,2	84,1	88,4	91,0
2020 ...	85,8	80,7	75,5	71,5	68,9	65,7	64,7	64,2	68,6	74,5	79,6	82,5	73,5
2021 ...	94,7	99,9	97,2	99,1	106,6	114,6	127,6	143,5	166,7	222,8	241,3	276,3	149,2
2022 ...	286,0	294,6	298,2	356,7	331,2	323,9	376,1	523,6	608,2				
2023 ...													

5.3.1 Natural gas

reporting year	reporting month												yearly average
	Jan	Feb	Mar	Apr	May	Jun	Jul	Aug	Sep	Oct	Nov	Dec	
Producer price index													
2015 = 100													
GP09-3522 24 Natural gas, when supplied to power plants													
2005 ...	65,5	65,0	65,0	66,5	66,8	67,0	66,5	66,3	66,6	73,7	75,6	75,3	68,3
2006 ...	78,3	79,1	79,7	76,5	77,5	76,7	77,5	77,5	75,6	76,3	79,6	78,9	77,8
2007 ...	77,0	76,7	73,9	72,5	69,8	70,1	70,2	73,3	71,7	75,8	77,3	77,6	73,8
2008 ...	82,0	82,9	81,9	86,4	88,6	90,2	96,8	97,1	101,2	109,8	109,4	107,3	94,5
2009 ...	107,2	107,2	104,8	92,9	92,9	89,3	84,9	84,9	82,3	84,6	87,3	87,4	92,1
2010 ...	85,1	83,4	83,5	84,2	85,3	89,3	95,4	97,1	96,3	96,5	96,5	97,9	90,9
2011 ...	100,2	100,2	100,2	102,5	103,2	103,2	111,2	111,2	111,2	111,4	111,4	111,4	106,4
2012 ...	111,4	113,2	115,4	116,9	116,9	116,9	117,9	117,9	117,9	119,5	118,7	118,3	116,7
2013 ...	118,0	116,6	116,6	115,6	115,9	115,6	115,1	115,1	116,1	113,3	113,2	112,4	115,3
2014 ...	112,5	110,4	108,0	104,9	100,7	96,9	97,8	99,2	97,1	102,9	104,2	107,5	103,5
2015 ...	109,7	101,5	102,7	103,3	102,4	100,8	98,9	98,6	98,7	96,2	93,4	93,9	100,0
2016 ...	89,2	85,0	82,2	77,0	76,2	76,6	77,7	76,8	75,1	78,0	81,1	84,1	79,9
2017 ...	85,4	83,1	80,6	82,6	82,3	84,4	82,3	82,0	81,6	85,5	87,4	89,0	83,9
2018 ...	89,7	90,1	90,7	90,7	91,8	92,9	94,2	94,2	97,9	99,7	102,3	99,9	94,5
2019 ...	97,3	96,0	90,5	88,6	85,1	82,2	79,7	75,8	76,7	78,3	82,2	85,0	84,8
2020 ...	83,8	73,7	68,5	65,2	61,8	55,9	56,1	58,6	65,3	73,9	78,3	80,6	68,5
2021 ...	82,6	88,0	86,4	88,8	99,3	108,6	124,2	145,0	183,5	249,1	262,7	328,4	153,9
2022 ...	325,6	289,3	320,6	361,4	338,8	355,1	415,7	535,2	611,3				
2023 ...													
GP09-3522 27 100 Natural gas, when supplied to reseller													
2005 ...	62,6	62,6	63,5	69,5	69,6	70,5	72,8	73,0	73,3	75,6	76,3	76,6	70,5
2006 ...	83,4	83,4	85,1	88,2	88,5	92,2	92,1	92,3	91,6	91,4	91,0	91,9	89,3
2007 ...	90,5	90,5	91,9	86,2	86,0	83,8	80,5	80,5	80,2	81,7	82,4	82,9	84,8
2008 ...	87,3	88,5	89,3	97,0	98,5	99,6	109,9	110,2	112,2	122,1	122,2	124,8	105,1
2009 ...	123,6	123,3	121,8	98,1	97,6	92,8	76,3	76,1	72,4	72,9	72,9	73,7	91,8
2010 ...	78,4	78,6	76,7	79,3	79,6	79,9	86,4	87,0	87,0	89,3	89,5	89,6	83,4
2011 ...	90,7	91,8	91,5	95,6	95,7	96,0	104,6	105,0	104,6	107,4	107,6	107,6	99,8
2012 ...	109,4	109,5	109,7	110,7	110,8	110,6	111,9	112,2	112,3	112,2	112,4	112,7	111,2
2013 ...	113,7	113,2	113,2	112,9	112,2	112,2	111,1	110,6	110,4	111,3	111,3	111,6	112,0
2014 ...	110,2	109,3	108,4	107,2	105,5	104,7	103,1	102,4	103,2	104,3	104,9	105,3	105,7
2015 ...	102,9	102,3	102,7	102,2	100,6	100,2	100,1	99,5	99,4	97,7	96,6	96,0	100,0
2016 ...	89,4	87,9	87,3	86,9	85,5	86,4	87,0	86,9	84,9	84,7	84,4	84,8	86,3
2017 ...	79,7	77,9	78,1	78,1	77,3	77,1	77,3	76,9	77,0	77,0	78,0	78,1	77,7
2018 ...	78,4	77,8	77,8	77,9	78,8	80,0	80,7	81,2	83,6	85,7	85,8	85,5	81,1
2019 ...	88,5	87,6	84,7	84,7	82,0	79,8	80,2	76,4	76,9	76,8	79,4	78,9	81,3
2020 ...	78,7	75,4	72,7	71,6	68,7	66,5	65,8	67,7	69,3	71,8	73,3	75,8	71,4
2021 ...	76,6	76,5	76,8	77,0	82,3	84,2	93,6	99,3	114,6	134,4	136,2	182,3	102,8
2022 ...	175,9	186,5	207,3	207,9	220,8	218,5	268,3	334,4	343,7				
2023 ...													
Consumer price index													
2015 = 100													
CC13-0452103000 Natural gas, excl. share in the costs													
2005 ...	73,1	73,4	73,4	73,7	73,9	74,0	74,8	75,7	76,7	80,7	81,1	81,2	76,0
2006 ...	87,3	87,8	87,8	88,5	88,9	89,0	89,2	89,3	89,5	92,7	93,4	93,4	89,7
2007 ...	95,7	95,6	95,5	92,3	91,8	91,8	91,2	91,2	90,8	91,1	91,0	91,0	92,4
2008 ...	94,0	94,2	94,3	95,6	96,1	96,6	98,6	100,5	103,8	110,9	111,6	111,8	100,7
2009 ...	113,1	112,3	111,5	100,1	99,5	99,1	95,2	94,2	93,7	90,6	90,3	89,4	99,1
2010 ...	89,6	89,8	89,7	90,0	90,0	90,0	90,0	90,2	90,3	91,1	91,3	91,4	90,3
2011 ...	92,4	92,7	92,7	92,9	93,0	93,1	93,7	94,2	95,4	97,4	97,7	97,9	94,4
2012 ...	98,8	99,1	99,1	99,2	99,2	99,2	99,2	99,6	99,9	100,0	100,1	100,1	99,5
2013 ...	100,5	100,5	100,5	100,6	100,6	100,8	100,9	100,9	101,2	101,1	101,2	101,2	100,8
2014 ...	101,1	101,1	101,1	101,1	101,1	101,1	101,0	101,1	101,0	101,0	101,0	100,4	101,0
2015 ...	100,4	100,4	100,3	100,1	100,1	100,1	99,9	99,9	99,8	99,7	99,7	99,5	100,0
2016 ...	98,4	98,2	98,2	98,0	97,9	97,6	97,3	97,2	97,0	96,3	96,0	96,0	97,3
2017 ...	94,0	93,8	93,6	93,5	93,4	93,4	93,2	93,2	93,3	93,2	93,2	93,2	93,4
2018 ...	92,7	92,6	92,5	92,5	92,5	91,9	91,9	91,8	91,8	91,8	91,9	92,0	92,2
2019 ...	94,6	94,8	95,0	95,5	95,6	95,7	95,9	96,0	96,1	96,5	96,6	96,8	95,8
2020 ...	97,0	97,1	97,2	97,2	97,2	97,1	95,1	95,3	95,1	95,1	94,8	94,9	96,1
2021 ...	98,9	99,1	99,3	99,2	99,3	99,4	99,6	100,0	100,5	102,1	103,9	106,4	100,6
2022 ...	130,7	134,5	140,8	146,3	154,1	159,7	174,4	183,8	196,1				
2023 ...													

5.3.1 Natural gas

reporting year	reporting month												yearly average
	Jan	Feb	Mar	Apr	May	Jun	Jul	Aug	Sep	Oct	Nov	Dec	
Export price index													
2015 = 100													
GPO9-062 Natural gas													
2005 ...	64,9	65,9	65,9	69,4	71,1	71,1	72,1	73,0	73,4	77,4	77,0	77,3	71,5
2006 ...	83,9	88,6	88,7	93,4	94,2	97,2	96,9	97,0	96,9	99,5	98,6	98,8	94,5
2007 ...	97,6	97,6	98,1	92,2	91,2	90,9	87,0	85,0	85,1	86,5	87,0	87,3	90,5
2008 ...	91,5	94,2	94,6	100,5	101,5	104,6	112,3	115,4	116,4	122,6	127,3	128,3	109,1
2009 ...	124,0	123,8	122,8	109,1	97,2	95,5	84,2	77,3	75,6	76,5	77,4	78,0	95,1
2010 ...	79,5	82,2	82,8	85,1	87,5	88,6	100,6	106,7	104,7	99,3	94,8	94,3	92,2
2011 ...	96,7	97,1	96,8	101,2	100,8	100,8	106,5	106,6	108,1	116,0	118,5	120,3	105,8
2012 ...	117,8	119,3	116,8	127,9	124,6	123,9	124,0	124,1	124,1	122,5	125,4	123,3	122,8
2013 ...	123,2	123,7	123,4	126,4	121,7	121,0	120,6	122,2	119,3	118,6	117,4	119,2	121,4
2014 ...	118,1	116,2	112,1	110,3	106,1	104,0	100,6	99,3	101,2	108,7	109,5	108,9	107,9
2015 ...	108,1	102,1	106,2	103,7	102,6	101,1	100,2	100,1	97,2	95,4	94,3	89,1	100,0
2016 ...	86,2	74,8	73,2	71,1	71,6	77,8	78,7	76,9	79,1	90,3	95,8	102,3	81,5
2017 ...	101,1	98,8	91,0	91,0	89,7	87,9	84,3	84,9	88,8	90,1	95,2	98,3	91,8
2018 ...	96,2	90,6	96,9	91,8	95,2	98,3	97,8	100,8	109,1	110,4	111,1	108,2	100,5
2019 ...	100,5	91,2	86,1	81,2	77,6	71,6	69,1	70,3	72,7	72,8	78,9	78,5	79,2
2020 ...	74,0	67,2	65,2	59,6	55,3	52,4	50,7	57,0	69,4	80,6	82,5	84,3	66,5
2021 ...	95,4	88,4	89,9	93,1	99,2	105,0	121,1	137,6	167,5	227,6	210,4	258,1	141,1
2022 ...	228,0	259,8	122,6	315,5	291,5	321,7	455,9	610,1	555,6				
2023 ...													

5.3.2. Natural gas

Supply to households, annual consumption 20 Gigajoule to under 200 Gigajoule

Cents/kWh, including taxes, levies and VAT

reference period	Germany	Belgium	Bosnia and Herzegovina	Bulgaria	Denmark	Estonia	France	Georgia	Greece
1st half 2008	6,41	5,85	-	3,54	9,59	3,35	5,21	-	-
2nd half 2008	7,62	7,29	-	3,91	9,79	3,71	5,78	-	-
1st half 2009	6,48	6,05	-	4,73	8,03	3,95	5,50	-	-
2nd half 2009	5,89	5,16	-	3,48	8,51	3,63	5,83	-	-
1st half 2010	5,65	5,29	3,77	3,68	9,54	3,62	5,21	-	-
2nd half 2010	5,71	6,04	4,47	4,31	9,65	4,01	5,75	-	-
1st half 2011	5,88	6,34	4,52	4,30	10,31	4,19	5,80	-	-
2nd half 2011	6,40	7,31	5,36	4,72	10,29	4,37	6,46	-	-
1st half 2012	6,37	6,89	5,55	4,94	9,80	5,00	6,35	-	-
2nd half 2012	6,48	7,34	5,55	5,56	9,55	5,18	6,82	-	10,17
1st half 2013	6,61	6,59	5,55	5,13	9,93	5,24	6,78	-	7,72
2nd half 2013	6,89	6,68	5,12	5,18	9,77	4,76	7,29	-	8,88
1st half 2014	6,78	6,58	5,12	4,91	9,08	4,91	7,01	-	7,23
2nd half 2014	6,81	6,50	5,12	4,84	8,78	4,94	7,62	-	7,98
1st half 2015	6,76	5,84	5,14	4,77	9,20	4,56	7,01	-	6,81
2nd half 2015	6,81	6,21	5,14	3,91	8,81	3,84	7,33	-	7,50
1st half 2016	6,61	5,47	3,91	3,68	8,33	3,46	6,50	-	5,64
2nd half 2016	6,42	5,34	3,36	3,11	8,58	3,28	6,76	-	6,52
1st half 2017	6,11	5,22	3,07	3,30	8,88	4,18	6,39	-	5,60P
2nd half 2017	6,09	5,52	3,27	3,75	8,75	4,13	6,95	-	-
1st half 2018	6,08	5,36	3,26	3,79	8,72	4,01	6,65	1,51	5,32e
2nd half 2018	6,08	6,25	3,26	4,37	9,13	4,25	7,63	1,51	6,54
1st half 2019	6,32	5,54	3,35	4,49	8,55	4,58	7,38	1,51	5,55
2nd half 2019	5,88	5,73	3,33	4,42	7,71	4,46	8,39	1,43	5,87
1st half 2020	5,97	4,96	3,74	3,96	7,50	4,41	7,20	1,39	4,83
2nd half 2020	6,20	4,98	3,46	3,48	7,47	4,11	7,51	1,25	5,17
1st half 2021	6,47	4,68	3,21	3,68	8,95	4,35	6,91	1,17	4,49
2nd half 2021	6,92	6,76	3,64	7,08	12,47	7,50	7,88	1,39	10,14
1st half 2022	8,06	9,39	4,38	7,64	16,00	11,06	8,50	1,51	8,88

reference period	Ireland	Italy	Croatia	Latvia	Liechtenstein	Lithuania	Luxembourg	Macedonia	Moldova
1st half 2008	5,43	6,29	2,73	3,13	-	3,29	5,57	-	-
2nd half 2008	6,50	7,20	2,77	5,00	-	3,82	5,14	-	-
1st half 2009	6,44	7,57	3,19	5,23	-	4,25	4,92	-	-
2nd half 2009	5,50	5,34	3,28	3,79	-	4,06	4,61	-	-
1st half 2010	4,96	6,17	3,83	3,14	-	3,75	4,34	-	-
2nd half 2010	5,27	7,87	3,80	4,06	-	4,53	4,73	-	-
1st half 2011	5,09	6,94	3,75	3,87	-	4,35	5,11	-	-
2nd half 2011	6,18	8,75	3,72	4,57	-	5,40	5,79	-	-
1st half 2012	6,14	7,69	3,83	5,12	-	5,10	5,78	-	-
2nd half 2012	6,72	9,68	4,72	5,60	-	6,11	5,94	-	-
1st half 2013	6,53	8,34	4,65	5,06	-	6,03	6,24	-	-
2nd half 2013	7,22	9,46	4,68	5,04	-	6,14	5,66	-	-
1st half 2014	6,81	7,97	4,64	4,84	8,16	5,59	5,32	-	-
2nd half 2014	7,45	9,51	4,75	4,88	8,57	4,99	5,14	-	-
1st half 2015	6,73	7,66	4,73	4,96	9,13	4,23	4,96	-	3,20
2nd half 2015	7,24	9,05	4,59	4,85	9,25	4,36	4,82	-	3,15
1st half 2016	6,52	7,31	4,28	4,24	8,45	4,13	4,54	-	3,02
2nd half 2016	6,78	8,38p	3,70	4,06	8,23	3,87	4,18	-	2,95
1st half 2017	6,32	7,04	3,59	3,78	7,44	3,65	4,18	4,82	3,08
2nd half 2017	6,49	8,74	3,66	3,93	7,46	3,95	3,98	5,10	3,11
1st half 2018	6,32	7,14	3,68	3,85	6,81	3,99	4,11	4,07	2,54
2nd half 2018	7,61	9,51	3,60	4,50	8,17	4,05	4,29	6,06	2,89
1st half 2019	6,83	7,69	3,75	4,46	7,52	4,50	4,48	5,98	2,97
2nd half 2019	7,64	9,34	4,06	3,51	8,41	4,06	4,14	5,75	3,01
1st half 2020	6,69	7,28	3,89	3,15	7,87	3,61	4,12	5,44	3,02
2nd half 2020	7,01	8,97	3,77	2,80	7,76	2,95	3,66	4,54	2,61
1st half 2021	6,20	7,03	3,74	2,97	7,13	2,79	4,38	4,88	2,43
2nd half 2021	7,83	10,05	3,98	4,32	7,26	4,10	6,39	5,70	4,70
1st half 2022	8,47	9,86	4,12	4,62	11,28	5,87	8,56	-	8,42

5.3.2. Natural gas

Supply to households, annual consumption 20 Gigajoule to under 200 Gigajoule

Cents/kWh, including taxes, levies and VAT

reference period	Netherlands	Austria	Poland	Portugal	Romania	Serbia	Sweden	Slovakia	Slovenia
1st half 2008	6,97	5,86	4,16	6,25	3,32	-	9,29	4,28	5,58
2nd half 2008	7,57	6,16	5,15	6,29	3,36	-	10,16	4,65	7,12
1st half 2009	8,10	6,49	3,89	6,04	2,92	-	8,74	4,62	6,58
2nd half 2009	6,74	6,20	4,60	5,95	2,68	-	9,40	4,76	5,39
1st half 2010	6,80	6,22	4,25	5,94	2,75	-	10,04	4,36	5,82
2nd half 2010	7,20	6,02	5,05	6,30	2,78	-	10,61	4,46	6,73
1st half 2011	6,89	6,94	4,63	6,10	2,84	-	11,86	4,65	6,68
2nd half 2011	7,86	7,21	5,00	7,38	2,76	-	11,65	5,12	7,92
1st half 2012	7,40	7,58	4,69	7,39	2,71	-	11,74	5,15	7,98
2nd half 2012	8,44	7,63	5,76	8,53	2,74	-	12,68	5,14	7,30
1st half 2013	7,90	7,67	4,70	8,36	2,85	4,10	12,27	4,99	6,68
2nd half 2013	8,63	7,54	5,09	9,33	3,07	4,39	12,24	5,18	7,10
1st half 2014	7,89	7,48	4,89	9,34	3,09	4,28	11,84	5,08	6,67
2nd half 2014	8,20	7,30	5,00	10,39	3,19	4,51	11,38	5,19	6,34
1st half 2015	7,56	7,30	5,01	9,76	3,11	4,66	11,31	4,96	6,29
2nd half 2015	8,03	7,11	4,98	9,82	3,40	4,00	11,73	4,95	6,09
1st half 2016	7,79	6,90	3,92	9,13	3,32	3,75	11,29	4,60	5,99
2nd half 2016	8,08	6,74	4,41	8,15	3,23	3,26	11,42	4,45	5,63
1st half 2017	7,63	6,74	4,17	7,73	3,03 e	3,21	12,12	4,21	5,53
2nd half 2017	8,15	6,98	4,42	7,99	3,08 e	3,39	11,25	4,45	5,32
1st half 2018	8,15	6,69	4,23	7,59	3,21 e	3,35	11,53	4,27	5,47
2nd half 2018	8,61	7,01	4,50	7,84	3,54 e	3,42	12,23	4,59	5,77
1st half 2019	9,21	6,60	4,73	7,60	3,47 e	3,35	11,83	4,49	5,72
2nd half 2019	9,65	6,74	4,65	7,76	3,32	3,48	11,67	4,81	5,61
1st half 2020	9,95	6,48	4,25	7,85	3,24 e	3,37	9,80 e	4,57	5,86
2nd half 2020	10,10	6,56	4,19	7,83	3,20	3,44	10,73 e	4,80	5,49
1st half 2021	9,61	6,36	3,76	7,62	3,17 e	3,37	12,34 e	4,11	5,47
2nd half 2021	10,97	6,95	4,73	7,73	4,75 e	3,42	18,55 e	4,23	5,87
1st half 2022	12,93	7,67	5,49	8,37	6,11	3,36	-	4,88	6,91

reference period	Spain	Czech Republic	Turkey	Ukraine	Hungary	United Kindom
1st half 2008	5,75	4,39	3,25	-	4,04	3,95
2nd half 2008	6,53	5,29	4,67	-	4,65	4,78
1st half 2009	6,11	4,95	3,90	-	4,82	4,26
2nd half 2009	5,35	4,72	3,08	-	4,76	4,26
1st half 2010	5,34	4,69	3,23	-	5,35	4,05
2nd half 2010	5,40	5,17	3,35	-	5,54	4,22
1st half 2011	5,36	5,44	2,89	-	5,61	4,25
2nd half 2011	5,40	5,95	2,93	-	5,70	5,23
1st half 2012	6,61	6,59	3,18	-	4,83	5,22
2nd half 2012	8,63	6,61	4,09	-	5,17	5,78
1st half 2013	7,32	6,41	4,09	-	4,32	5,31
2nd half 2013	8,92	5,75	3,71	-	4,20	5,88
1st half 2014	7,52	5,48	3,26	-	3,65	6,00
2nd half 2014	9,59	5,63	3,73	-	3,51	6,46
1st half 2015	7,31	5,74	3,78	-	3,53	6,35
2nd half 2015	9,56	5,83	3,47	-	3,52	6,68
1st half 2016	6,77	5,83	3,36	1,82	3,44	5,53
2nd half 2016	8,57	5,63	3,01	2,38	3,60	5,01
1st half 2017	6,67	5,50	2,58	2,31	3,52	4,69
2nd half 2017	8,65	5,66	2,43	2,17	3,65	4,79
1st half 2018	6,65	5,75	2,16	2,09	3,58	4,65
2nd half 2018	8,75	5,69	2,09	2,48	3,47	5,18
1st half 2019	7,36	5,86	1,99	2,67	3,46	4,93
2nd half 2019	10,21	5,88	2,63	2,27	3,34	5,04
1st half 2020	7,18	5,73	2,39	1,81	3,19	4,76
2nd half 2020	8,90	5,58	1,94	2,58	3,08	-
1st half 2021	6,91	5,62	1,89	2,73	3,07	-
2nd half 2021	10,82	5,54	1,82	-	3,05	-
1st half 2022	8,97	10,1	1,70	-	2,91	-

Source: Eurostat, Energy Statistics - prices (New methodology from 2007 onwards)

5.3.3. Natural gas

Supply to industrial customers, annual consumption 100.000 Gigajoule to under 1.000.000 Gigajoule

Cents/kWh, including excise duties, excluding value-added tax

reference period	Germany	Belgium	Bosnia and Herzegovina	Bulgaria	Denmark	Estonia	Finland	France	Georgia
1st half 2008	3,74	3,14	-	1,95	2,81	2,29	2,70	2,96	-
2nd half 2008	4,09	3,56	-	2,48	2,89	2,87	3,20	3,51	-
1st half 2009	3,59	3,17	-	2,93	2,51	2,56	2,95	3,06	-
2nd half 2009	3,29	3,15	-	1,88	2,08	2,21	2,81	2,68	-
1st half 2010	3,32	2,37	-	2,16	2,76	2,76	2,84	2,73	-
2nd half 2010	3,48	2,51	-	2,74	3,30	2,74	3,26	2,77	-
1st half 2011	3,61	2,66	-	2,65	3,63	2,70	4,06	2,72	-
2nd half 2011	3,62	2,78	5,45	2,93	3,58	3,01	4,73	2,86	-
1st half 2012	3,45	2,87	5,66	3,33	3,55	3,59	4,59	3,03	-
2nd half 2012	3,49	2,90	5,66	3,69	3,70	3,42	4,67	3,08	-
1st half 2013	3,71	2,99	5,66	3,28	3,95	3,57	4,74	3,19	-
2nd half 2013	3,80	3,02	5,31	3,17	3,80	3,42	4,75	3,31	-
1st half 2014	3,54	2,75	5,31	3,17	3,20	3,44	4,45	3,14	-
2nd half 2014	3,19	2,63	5,31	3,06	3,15	3,62	4,38	3,06	-
1st half 2015	3,16	2,61	5,32	2,84	3,32	3,35	4,34	3,04	-
2nd half 2015	2,99	2,49	5,32	2,29	3,07	2,61	3,92	2,91	-
1st half 2016	2,65	2,14	4,25	1,90	2,50	2,43	4,02	2,39	-
2nd half 2016	2,64	2,05	3,79	1,50	2,60	2,25	4,04	2,40	-
1st half 2017	2,61	2,01	3,43	1,72	2,76	2,76	4,52	2,47	-
2nd half 2017	2,55	1,95	3,58	1,99	2,76	2,58	-	2,36	-
1st half 2018	2,57	2,04	3,56	2,02	3,09	2,96	-	2,79	2,11
2nd half 2018	2,65	2,18	3,57	2,38	3,38	3,35	-	2,73	2,21
1st half 2019	2,68	2,06	3,67	2,60	2,72	3,19	-	2,69	2,26
2nd half 2019	2,50	1,85	3,72	2,19	2,31	3,14	-	2,50	2,14
1st half 2020	2,30	1,74	3,97	1,77	2,00	2,37	-	2,13	1,97
2nd half 2020	2,34	1,66	3,75	1,49	2,20	2,25	-	2,10	1,61
1st half 2021	2,65	1,98	3,54	2,03	2,89	2,81	4,86	2,30	1,54
2nd half 2021	3,85	3,47	3,87	4,70	7,66	5,38	8,63	4,67	1,59
1st half 2022	5,54	4,99	4,56	-	10,18	9,00	11,62	6,28	1,89

reference period	Greece	Ireland	Italy	Croatia	Latvia	Liechtenstein	Lithuania	Luxembourg	Macedonia
1st half 2008	-	2,90	3,00	-	2,81	-	2,91	2,12	-
2nd half 2008	-	3,26	3,68	2,31	3,81	-	3,84	2,53	-
1st half 2009	-	3,14	3,28	2,64	3,73	-	2,59	2,67	-
2nd half 2009	-	2,31	2,45	2,68	2,48	-	2,30	2,54	-
1st half 2010	-	2,31	2,63	3,40	2,45	-	2,87	2,45	-
2nd half 2010	-	2,50	2,65	3,94	3,00	-	3,14	2,78	-
1st half 2011	-	2,86	2,79	4,05	2,80	-	3,38	3,32	3,79
2nd half 2011	-	2,70	3,07	4,32	3,27	-	4,13	3,77	4,08
1st half 2012	-	3,11	3,57	3,71	3,52	-	4,38	3,59	4,59
2nd half 2012	5,32	3,26	3,52	4,74	3,83	-	4,61	4,06	4,72
1st half 2013	4,93	3,48	3,41	4,17	3,58	-	4,23	4,15	4,06
2nd half 2013	4,52	3,59	3,32	3,61	3,54	-	4,18	3,51	3,80
1st half 2014	4,36	3,35	3,16	3,11	3,29	-	3,80	3,28	3,76
2nd half 2014	4,28	3,05	2,96	3,80	3,38	-	3,15	3,14	-
1st half 2015	3,79	3,01	2,92	3,58	3,31	-	2,02	3,15	-
2nd half 2015	3,20	2,99	2,77	2,87	2,79	-	1,85	2,96	2,63
1st half 2016	2,50	2,42	2,51	2,60	2,49	-	2,12	2,58	2,15
2nd half 2016	2,52	2,60	2,32p	2,40	2,33	-	1,85	2,43	1,96
1st half 2017	2,69p	2,42	2,27p	2,27	2,54	-	2,26	2,31	2,36
2nd half 2017	2,53	2,42	2,23	2,20	2,64	-	2,98	-	2,51
1st half 2018	2,60 e	2,67	2,43	2,34	2,71	-	3,03	2,33	2,50
2nd half 2018	3,03	2,86	2,67	2,66	3,06	-	3,45	-	3,08
1st half 2019	3,08	2,70	2,85	2,84	2,89	-	3,00	2,20	2,99
2nd half 2019	2,95	2,43	2,43	2,46	2,43	-	2,13	-	2,89
1st half 2020	2,16	2,22	2,36	2,61	2,13	-	1,90	1,87	2,10
2nd half 2020	1,75	2,05	2,12	2,23	1,89	-	1,87	-	2,10
1st half 2021	2,25	2,65	2,30	2,35	1,93	-	2,50	2,47	1,95
2nd half 2021	4,48	4,54	3,88	4,74	3,25	-	6,39	-	2,99
1st half 2022	7,48	5,36	7,31	5,25	5,80	-	9,56	6,57	8,81

5.3.3. Natural gas

Supply to industrial customers, annual consumption 100.000 Gigajoule to under 1.000.000 Gigajoule

Cents/kWh, including excise duties, excluding value-added tax

reference period	Moldova	Netherlands	Austria	Poland	Portugal	Romania	Serbia	Sweden	Slovakia
1st half 2008	-	3,02	-	2,67	2,37	2,43	-	4,65	3,10
2nd half 2008	-	3,27	-	2,98	2,61	2,62	-	4,40	4,35
1st half 2009	-	3,21	2,62	2,49	2,56	2,13	-	3,17	3,64
2nd half 2009	-	2,84	2,57	2,56	2,30	1,86	-	3,90	2,92
1st half 2010	-	2,55	2,47	2,66	2,60	2,05	-	4,08	2,97
2nd half 2010	-	2,59	2,76	2,85	2,90	1,92	-	4,38	3,02
1st half 2011	-	2,78	2,93	2,87	2,88	2,12	-	4,78	3,04
2nd half 2011	-	2,72	3,07	2,74	3,35	2,31	-	4,95	3,25
1st half 2012	-	2,97	3,67	3,04	3,56	2,68	-	4,88	3,33
2nd half 2012	-	3,04	3,80	3,36	3,69	2,42	-	4,97	3,21
1st half 2013	-	3,26	3,95	3,25	3,66	2,48	3,83	4,89	3,57
2nd half 2013	-	3,12	3,64	3,22	3,61	2,42	3,75	4,72	3,47
1st half 2014	-	3,07	3,68	3,27	3,64	2,66	3,71	4,24	3,40
2nd half 2014	-	2,72	3,39	3,17	3,81	2,76	3,80	4,04	3,45
1st half 2015	2,72	3,04	3,43	3,24	3,55	2,60	4,35	4,19	3,24
2nd half 2015	2,69	2,64	3,24	2,91	3,27	2,48	3,39	3,81	3,21
1st half 2016	2,46	2,55	2,97	2,27	2,78	2,42	2,81	3,41	2,81
2nd half 2016	2,44	2,38	2,84	2,16	2,36	2,28	2,85	3,55	2,77
1st half 2017	2,52	2,53	2,76	2,34	2,39	2,20e	2,91	3,34	2,51
2nd half 2017	2,60	2,30	2,80	2,19	2,29	2,19e	2,90	3,89	2,46
1st half 2018	2,07	2,63	2,66	2,41	2,38	2,30e	3,06	4,16	2,50
2nd half 2018	2,08	2,50	3,00	2,63	2,72	2,48e	3,59	4,33	2,64
1st half 2019	2,27	2,60	2,71	2,81	2,78	2,87e	3,77	3,36	2,80
2nd half 2019	2,35	2,10	2,53	2,57	2,65	2,66e	3,68	3,10	2,76
1st half 2020	2,36	2,43	2,33	2,36	2,35	2,45e	3,48	3,49e	2,51
2nd half 2020	1,89	2,12	2,41	2,25	2,00	1,90	2,54	3,19e	2,57
1st half 2021	1,59	2,79	2,78	2,44	2,03	2,03e	2,50	4,08e	2,12
2nd half 2021	3,07	4,29	4,76	4,26	3,34	4,65e	3,38	8,37e	3,25
1st half 2022	7,48	6,40	6,54	7,74	6,56	7,59	3,53	-	6,75

reference period	Slovenia	Spain	Czech Republic	Turkey	Ukraine	Hungary	United Kindom
1st half 2008	3,31	2,57	2,96	2,48	-	2,73	2,62
2nd half 2008	4,19	3,04	3,68	3,26	-	3,75	2,99
1st half 2009	-	2,69	3,04	2,74	-	3,20	2,56
2nd half 2009	2,72	2,34	2,41	2,17	-	3,12	1,95
1st half 2010	4,07	2,44	2,73	2,26	-	2,80	2,02
2nd half 2010	3,59	2,52	3,16	2,31	-	3,40	2,14
1st half 2011	-	2,69	2,94	2,12	-	3,57	2,37
2nd half 2011	-	3,10	3,28	2,09	-	3,95	2,57
1st half 2012	4,82	3,37	3,19	2,55	-	4,46	2,95
2nd half 2012	4,64	3,50	3,17	2,99	-	4,21	3,05
1st half 2013	4,11	3,48	3,10	2,99	-	4,17	3,14
2nd half 2013	4,02	3,38	3,05	2,63	-	3,96	3,11
1st half 2014	3,65	3,36	2,99	2,38	-	3,31	3,09
2nd half 2014	3,57	3,47	2,81	2,61	-	2,87	2,86
1st half 2015	3,25	3,17	2,71	2,77	-	2,78	2,93
2nd half 2015	3,00	2,92	2,64	2,45	-	2,93	2,78
1st half 2016	2,72	2,44	2,28	2,34	1,95	2,69	2,25
2nd half 2016	2,46	2,39	2,26	2,13	2,11	2,57	1,96
1st half 2017	2,53	2,44	2,23	1,80	2,54	2,48	1,91
2nd half 2017	2,47	2,38	2,35	1,66	2,39	2,37	1,81
1st half 2018	2,53	2,47	2,41	1,68	2,28	2,48	2,10
2nd half 2018	2,76	2,78	2,58	1,86	2,85	2,80	2,21
1st half 2019	2,76	2,83	2,60	2,10	2,45	2,74	2,18
2nd half 2019	2,62	2,74	2,46	2,35	1,93	2,36	2,18
1st half 2020	2,55	2,36	2,26	2,11	1,45	2,16	2,27
2nd half 2020	2,41	1,99	2,03	1,57	1,56	1,94	-
1st half 2021	2,54	2,24	2,36	-	2,11	2,24	-
2nd half 2021	4,36	3,77	3,99	2,42	-	6,18	-
1st half 2022	5,62	7,71	7,31	5,39	-	-	-

Source: Eurostat, Energy Statistics - prices (New methodology from 2007 onwards)

5.4.1 Petrol - Indices

reporting year	reporting month												yearly average
	Jan	Feb	Mar	Apr	May	Jun	Jul	Aug	Sep	Oct	Nov	Dec	
Export price index													
2015 = 100													
GP09-1920 21 Motor petrol													
2005 ...	58,8	63,2	68,8	76,0	71,6	80,6	92,1	99,2	107,7	97,0	83,2	83,2	81,8
2006 ...	90,2	85,0	91,4	106,0	105,4	107,9	116,0	104,4	82,6	77,5	77,9	80,0	93,7
2007 ...	74,7	81,6	91,5	102,5	109,6	108,2	104,8	98,2	100,4	102,5	111,1	108,3	99,5
2008 ...	107,2	111,1	112,3	119,8	134,4	142,5	136,4	128,2	119,5	94,5	70,7	51,6	110,7
2009 ...	57,4	64,1	66,4	73,0	85,8	94,6	85,3	95,0	85,3	89,0	92,1	89,8	81,5
2010 ...	96,2	97,4	107,6	112,2	108,5	109,5	104,2	103,2	102,6	104,5	107,0	118,6	106,0
2011 ...	121,2	124,2	132,5	142,6	138,0	132,2	138,2	132,6	137,0	131,7	129,2	131,6	132,6
2012 ...	142,1	149,9	161,6	161,0	148,6	139,4	149,4	161,7	161,6	148,9	141,3	138,7	150,4
2013 ...	142,3	152,7	146,2	138,8	138,6	137,0	144,8	144,7	137,7	130,6	130,6	131,5	139,6
2014 ...	129,6	132,9	132,2	136,8	136,0	141,2	138,3	132,9	133,4	121,7	114,5	89,5	128,3
2015 ...	79,8	98,1	108,8	115,7	118,7	121,3	119,3	99,8	88,3	84,1	86,9	79,5	100,0
2016 ...	70,3	63,7	76,6	84,4	89,3	89,8	80,6	81,5	84,2	90,4	84,8	99,2	82,9
2017 ...	100,8	101,8	96,3	101,5	93,8	88,3	89,3	92,2	95,5	93,6	102,0	99,3	96,2
2018 ...	103,8	98,2	100,2	109,1	121,0	118,1	120,7	122,3	120,1	117,9	97,6	85,1	109,5
2019 ...	84,8	93,0	105,7	121,0	123,3	106,6	113,2	104,3	104,3	102,5	105,0	105,0	105,7
2020 ...	102,3	93,6	54,6	34,5	50,0	63,7	68,2	68,0	66,2	64,6	63,6	70,1	66,6
2021 ...	80,2	91,6	100,6	103,0	106,1	111,9	119,3	117,9	120,3	137,2	137,8	124,0	112,5
2022 ...	140,9	156,7	105,4	193,2	235,4	253,2	218,4	184,3	166,7				
2023 ...													

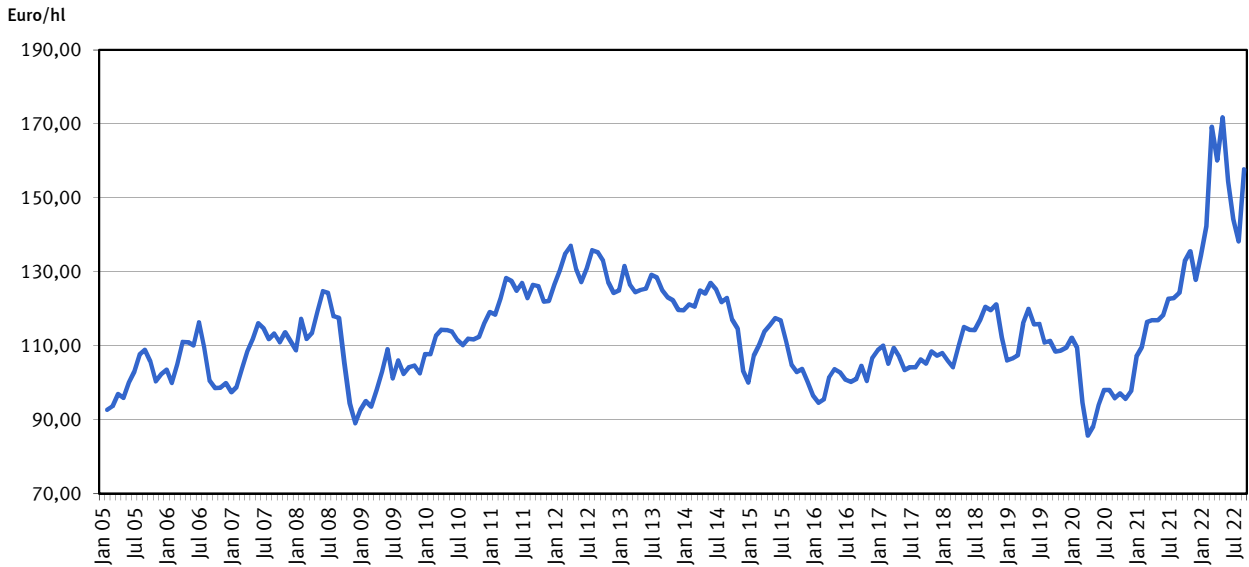
5.4.2 Petrol prices

Euros/hectolitre, including mineral oil tax and oil storage contribution, excluding value added tax

Reference day: 15th of each month

reporting year	Reporting month												yearly average
	Jan	Feb	Mar	Apr	May	Jun	Jul	Aug	Sep	Oct	Nov	Dec	
when delivered to wholesale trader, 15 - 20m3 per order, free recipient													
2005 ...	91,19	92,71	93,64	96,96	95,88	100,11	102,99	107,73	108,91	105,76	100,42	102,32	99,89
2006 ...	103,56	99,96	105,00	111,06	111,02	110,08	116,38	109,59	100,59	98,64	98,70	99,91	105,37
2007 ...	97,46	98,87	103,76	108,58	111,85	116,11	114,72	111,83	113,30	111,01	113,66	111,22	109,36
2008 ...	108,85	117,27	111,80	113,45	119,27	124,76	124,33	117,99	117,54	105,37	94,41	89,11	112,01
2009 ...	92,64	95,04	93,54	98,08	103,09	109,11	101,21	106,04	102,37	104,24	104,66	102,56	101,05
2010 ...	107,76	107,75	112,74	114,35	114,25	113,85	111,60	110,16	111,90	111,73	112,48	116,08	112,05
2011 ...	119,14	118,46	122,83	128,30	127,53	124,95	126,99	122,94	126,43	126,16	121,99	122,18	123,99
2012 ...	126,58	130,35	134,94	137,02	130,69	127,24	130,92	135,79	135,31	133,00	127,29	124,31	131,12
2013 ...	125,04	131,60	126,59	124,52	125,05	125,41	129,20	128,47	125,03	123,07	122,29	119,72	125,50
2014 ...	119,65	121,18	120,56	124,90	124,15	127,01	125,25	121,76	122,91	117,14	114,69	103,32	120,21
2015 ...	100,08	107,38	110,28	113,80	115,56	117,50	116,87	111,13	104,82	102,96	103,71	100,28	108,70
2016 ...	96,51	94,64	95,57	101,48	103,70	102,87	100,87	100,22	101,00	104,61	100,53	106,75	100,73
2017 ...	108,82	110,03	105,22	109,46	107,00	103,42	104,26	104,20	106,29	105,14	108,45	107,34	106,64
2018 ...	108,00	105,93	104,23	109,77	115,01	114,38	114,28	117,00	120,48	119,62	121,20	112,29	113,52
2019 ...	106,05	106,54	107,45	116,07	119,97	115,81	115,90	110,92	111,30	108,44	108,76	109,48	111,39
2020 ...	112,20	109,60	94,63	85,72	88,22	94,05	98,08	98,04	95,84	97,14	95,65	97,69	97,24
2021 ...	107,06	109,49	116,43	116,92	116,92	118,39	122,77	122,93	124,31	132,91	135,54	127,84	120,96
2022 ...	134,47	142,29	169,27	160,14	171,75	154,42	144,34	138,28	157,76				
2023 ...													

5.4.2 Petrol prices when delivered to wholesale trader, 15 - 20m3 per order, free recipient



5.5.1 Diesel fuel - Indices

reporting year	reporting month												yearly average
	Jan	Feb	Mar	Apr	May	Jun	Jul	Aug	Sep	Oct	Nov	Dec	
Export price index													
2015 = 100													
GP09-1920 26 Diesel fuel and light heating oil													
2005 ...	72,0	75,1	88,4	90,8	84,6	99,5	103,4	109,3	115,9	116,2	105,2	103,0	97,0
2006 ...	105,8	106,4	110,4	117,6	114,9	116,1	117,6	117,7	104,9	100,9	98,1	96,1	108,9
2007 ...	90,9	95,9	98,9	104,0	104,6	109,8	111,7	109,6	117,1	119,9	135,0	130,2	110,6
2008 ...	126,4	133,4	144,4	151,1	176,5	180,3	177,1	157,2	151,4	130,1	110,9	81,2	143,3
2009 ...	83,4	76,8	76,2	78,7	80,5	91,6	86,9	93,9	87,8	94,4	94,7	94,7	86,6
2010 ...	99,0	101,4	109,5	117,8	116,2	119,1	112,5	114,1	115,4	116,1	119,7	129,4	114,2
2011 ...	135,1	142,6	153,7	155,2	145,1	145,0	149,2	145,0	150,1	153,9	160,1	155,2	149,2
2012 ...	162,0	165,3	169,0	166,8	160,4	150,5	160,7	170,1	169,6	169,6	164,5	156,9	163,8
2013 ...	156,7	162,4	156,8	148,9	148,8	147,2	154,7	154,1	156,5	150,4	149,0	149,9	153,0
2014 ...	146,3	147,4	143,5	144,6	143,6	145,5	143,8	143,3	142,2	132,9	127,7	106,4	138,9
2015 ...	93,4	106,1	110,9	114,9	118,6	112,9	103,6	92,7	92,8	90,6	90,5	73,2	100,0
2016 ...	61,9	63,0	72,3	74,1	83,6	88,3	82,4	82,1	84,3	93,9	89,1	101,3	81,4
2017 ...	102,0	101,8	95,3	97,2	90,4	84,0	86,8	89,0	97,1	99,4	104,7	105,0	96,1
2018 ...	108,6	101,5	103,1	111,7	123,6	121,2	120,7	123,1	127,6	136,1	123,3	107,3	117,3
2019 ...	108,4	115,7	117,4	121,2	121,6	110,1	113,9	110,9	116,9	115,1	114,9	117,9	115,3
2020 ...	111,5	102,4	77,3	58,4	58,9	70,6	76,5	74,7	67,4	68,4	72,8	80,5	76,6
2021 ...	86,5	97,1	101,6	100,7	105,1	112,6	116,1	113,8	123,0	143,3	140,9	132,5	114,4
2022 ...	150,5	164,2	151,4	223,1	230,5	263,6	245,6	233,4	224,8				
2023 ...													

5.5.2 Diesel fuel prices

Euros/hectolitre, including mineral oil tax and oil storage contribution, excluding value added tax

Reference day 15th of each month

reporting year	reporting month												yearly average
	Jan	Feb	Mar	Apr	May	Jun	Jul	Aug	Sep	Oct	Nov	Dec	
when delivered to wholesale trader, at least 100 hl per order, free recipient (from January 2010 on ex stock)													
2005 ...	76,48	77,01	83,81	83,92	80,11	88,02	87,94	91,50	91,90	94,10	88,35	88,34	85,96
2006 ...	87,90	87,40	90,34	93,63	92,12	92,52	95,15	93,71	87,04	88,61	86,54	85,99	90,08
2007 ...	83,69	85,05	86,50	89,41	89,08	91,94	92,14	91,76	94,48	94,94	102,35	101,77	91,93
2008 ...	97,61	101,75	107,17	108,37	119,13	120,41	121,37	109,52	107,40	99,42	92,48	83,33	105,66
2009 ...	82,63	79,70	77,21	81,03	81,15	86,42	81,54	86,09	83,55	87,13	86,26	85,46	83,18
2010 ...	88,87	89,16	93,20	96,95	97,42	96,95	95,21	94,58	96,52	95,88	98,54	101,21	95,37
2011 ...	104,79	107,08	111,60	112,31	108,22	110,77	111,07	107,34	110,82	114,32	116,51	112,05	110,57
2012 ...	116,36	117,22	119,54	117,43	113,93	109,93	114,61	119,71	118,40	120,14	116,31	112,29	116,32
2013 ...	112,99	115,80	112,15	107,96	108,74	109,18	111,28	111,50	112,69	110,41	108,66	108,44	110,82
2014 ...	106,60	107,97	106,01	107,68	107,55	108,40	106,15	105,97	105,54	101,36	99,64	90,25	104,43
2015 ...	85,41	94,75	92,71	95,27	96,09	94,41	92,05	87,58	86,08	85,30	86,66	77,44	89,48
2016 ...	73,74	74,79	78,14	79,40	83,94	83,96	81,82	82,64	81,94	87,80	84,35	90,83	81,95
2017 ...	90,66	91,23	88,04	90,44	87,09	83,72	85,04	85,48	88,48	90,08	90,73	91,60	88,55
2018 ...	93,53	90,74	90,52	94,27	99,58	98,66	97,73	100,09	103,70	106,54	109,76	99,11	98,69
2019 ...	95,10	97,77	96,91	98,68	99,86	94,74	96,27	95,04	98,49	96,37	96,79	97,93	97,00
2020 ...	100,11	96,23	83,70	78,01	76,45	80,04	82,54	82,41	77,73	79,94	79,66	83,84	83,39
2021 ...	93,31	97,46	100,82	99,16	100,92	103,75	105,63	104,72	107,59	120,68	119,97	116,49	105,88
2022 ...	125,00	130,95	172,86	158,52	156,53	167,46	155,64	152,24	159,21				
2023 ...													
when delivered to bulk consumer, 50 - 70 hl per order, delivered free													
2005 ...	78,15	78,56	85,36	85,52	81,79	89,61	89,60	93,07	93,55	95,73	90,12	90,16	87,60
2006 ...	89,39	88,94	92,01	95,20	93,77	94,04	96,74	95,21	88,73	90,16	88,07	87,62	91,66
2007 ...	85,26	86,54	88,06	90,96	90,70	93,55	93,74	93,46	95,98	96,51	103,96	103,56	93,52
2008 ...	99,21	103,29	108,70	110,17	120,95	122,59	123,23	111,54	109,24	101,50	94,86	85,14	107,54
2009 ...	84,90	81,87	79,31	83,01	83,22	88,34	83,62	88,05	85,70	89,23	88,48	87,58	85,28
2010 ...	90,90	91,01	94,90	98,78	99,31	98,74	97,00	96,33	98,28	97,69	100,03	103,09	97,17
2011 ...	106,92	109,55	113,49	114,39	110,33	112,84	112,88	109,45	112,72	115,92	118,45	113,99	112,58
2012 ...	118,19	118,99	121,27	119,12	115,71	111,79	116,26	121,61	120,45	121,86	118,12	114,19	118,13
2013 ...	114,72	117,38	113,94	109,83	110,57	110,88	113,02	113,22	114,48	112,17	110,40	110,27	112,57
2014 ...	108,36	109,91	107,63	109,40	109,19	109,96	107,87	107,71	107,30	103,10	101,42	92,43	106,19
2015 ...	87,40	96,12	94,57	97,01	97,87	96,10	93,68	89,54	88,15	87,25	88,68	79,75	91,34
2016 ...	75,55	76,43	79,93	80,92	85,35	85,60	83,47	84,40	83,66	89,56	86,27	92,65	83,65
2017 ...	92,57	93,02	89,82	92,21	88,77	85,59	86,70	87,36	90,40	92,01	92,68	93,52	90,39
2018 ...	95,53	92,63	92,69	96,29	101,47	100,65	99,86	102,23	105,98	109,18	112,32	101,63	100,87
2019 ...	97,40	100,11	99,46	101,19	102,21	97,22	98,95	97,32	102,03	99,08	99,13	100,46	99,55
2020 ...	102,56	98,75	86,57	81,00	79,62	83,21	85,52	85,05	80,80	82,76	82,66	86,53	86,25
2021 ...	95,99	100,37	103,51	101,98	103,95	106,37	108,57	107,37	110,34	123,25	122,96	119,28	108,66
2022 ...	128,03	133,72	175,99	162,26	159,73	170,91	158,57	155,77	163,60				
2023 ...													

5.6.1 Light heating oil - Indices

reporting year	reporting month												yearly average
	Jan	Feb	Mar	Apr	May	Jun	Jul	Aug	Sep	Oct	Nov	Dec	
Export price index													
2015 = 100													
GP09-1920 26 Diesel fuel and light heating oil													
2005 ...	72,0	75,1	88,4	90,8	84,6	99,5	103,4	109,3	115,9	116,2	105,2	103,0	97,0
2006 ...	105,8	106,4	110,4	117,6	114,9	116,1	117,6	117,7	104,9	100,9	98,1	96,1	108,9
2007 ...	90,9	95,9	98,9	104,0	104,6	109,8	111,7	109,6	117,1	119,9	135,0	130,2	110,6
2008 ...	126,4	133,4	144,4	151,1	176,5	180,3	177,1	157,2	151,4	130,1	110,9	81,2	143,3
2009 ...	83,4	76,8	76,2	78,7	80,5	91,6	86,9	93,9	87,8	94,4	94,7	94,7	86,6
2010 ...	99,0	101,4	109,5	117,8	116,2	119,1	112,5	114,1	115,4	116,1	119,7	129,4	114,2
2011 ...	135,1	142,6	153,7	155,2	145,1	145,0	149,2	145,0	150,1	153,9	160,1	155,2	149,2
2012 ...	162,0	165,3	169,0	166,8	160,4	150,5	160,7	170,1	169,6	169,6	164,5	156,9	163,8
2013 ...	156,7	162,4	156,8	148,9	148,8	147,2	154,7	154,1	156,5	150,4	149,0	149,9	153,0
2014 ...	146,3	147,4	143,5	144,6	143,6	145,5	143,8	143,3	142,2	132,9	127,7	106,4	138,9
2015 ...	93,4	106,1	110,9	114,9	118,6	112,9	103,6	92,7	92,8	90,6	90,5	73,2	100,0
2016 ...	61,9	63,0	72,3	74,1	83,6	88,3	82,4	82,1	84,3	93,9	89,1	101,3	81,4
2017 ...	102,0	101,8	95,3	97,2	90,4	84,0	86,8	89,0	97,1	99,4	104,7	105,0	96,1
2018 ...	108,6	101,5	103,1	111,7	123,6	121,2	120,7	123,1	127,6	136,1	123,3	107,3	117,3
2019 ...	108,4	115,7	117,4	121,2	121,6	110,1	113,9	110,9	116,9	115,1	114,9	117,9	115,3
2020 ...	111,5	102,4	77,3	58,4	58,9	70,6	76,5	74,7	67,4	68,4	72,8	80,5	76,6
2021 ...	86,5	97,1	101,6	100,7	105,1	112,6	116,1	113,8	123,0	143,3	140,9	132,5	114,4
2022 ...	150,5	164,2	151,4	223,1	230,5	263,6	245,6	233,4	224,8				
2023 ...													

5.6.2 Light heating oil
When delivered to consumers in tank trucks, 40 - 50 hl per order, free consumer
Euros/hectolitre, including mineral oil tax and oil storage contribution, excluding value added tax
Reference day 15th of each month

reporting year	reporting month												yearly average
	Jan	Feb	Mar	Apr	May	Jun	Jul	Aug	Sep	Oct	Nov	Dec	
Kiel													
2005 ...	35,87	36,19	41,47	41,48	38,76	46,71	46,25	50,73	51,14	52,48	46,93	47,56	44,63
2006 ...	47,15	46,71	51,64	53,50	51,01	51,54	54,81	53,08	47,48	47,95	45,33	46,12	49,69
2007 ...	41,47	43,69	44,31	47,51	47,36	48,95	50,39	49,66	52,96	52,51	57,69	59,21	49,64
2008 ...	56,48	60,05	62,01	65,81	74,21	78,19	79,04	67,49	64,73	56,12	50,61	41,47	63,02
2009 ...	42,56	38,85	36,07	40,17	40,56	45,20	41,27	46,78	45,10	47,23	46,49	45,33	42,97
2010 ...	48,39	48,61	52,15	55,31	56,41	56,03	53,99	53,12	55,59	54,22	56,71	59,28	54,15
2011 ...	62,65
2012
2013
2014
2015
2016
2017
2018
2019
2020
2021
2022
2023
Hamburg													
2005 ...	35,99	36,11	41,40	41,51	38,87	46,74	46,78	50,73	51,05	52,65	46,98	47,58	44,70
2006 ...	47,21	46,74	51,51	53,42	51,48	51,48	54,81	53,08	47,52	47,98	45,38	46,05	49,72
2007 ...	41,53	43,68	44,31	47,48	47,25	48,95	50,14	49,52	52,90	52,40	57,60	59,14	49,58
2008 ...	56,45	60,04	62,89	65,73	74,83	78,49	79,15	67,72	65,01	56,65	50,88	40,99	63,24
2009 ...	42,79	38,66	36,55	41,69	41,75	47,04	42,51	46,71	44,22	47,78	47,31	46,74	43,65
2010 ...	49,07	49,33	53,60	56,51	57,36	57,17	55,18	54,07	56,63	55,24	57,89	60,21	55,19
2011 ...	63,79	65,33	69,23	69,80	66,75	69,66	68,75	65,94	69,02	71,52	73,77	69,84	(68,62)
2012 ...	74,32	75,02	77,01	74,99	72,52	68,31	72,80	76,82	75,95	77,85	74,64	70,85	74,26
2013 ...	71,51	74,19	70,69	66,11	67,19	67,45	69,82	70,72	71,62	69,45	67,90	67,83	69,54
2014 ...	66,34	67,73	65,22	66,92	67,15	67,91	65,60	65,69	65,95	60,52	59,06	49,72	63,98
2015 ...	44,39	53,46	51,46	54,27	55,20	53,19	50,77	46,05	44,59	43,50	43,69	35,12	47,97
2016 ...	31,46	33,08	36,55	37,37	41,73	42,83	40,60	41,15	40,45	45,60	42,50	48,91	40,19
2017 ...	48,44	49,34	46,09	48,94	45,41	41,72	43,10	42,62	45,96	47,03	48,16	48,84	46,30
2018 ...	51,52	48,01	48,88	53,01	57,99	56,62	55,99	57,59	60,18	62,76	60,60	52,13	55,44
2019 ...	51,48	55,57	55,23	57,43	58,28	52,51	55,13	52,50	55,24	54,36	54,35	55,54	54,80
2020 ...	53,90	49,55	36,83	32,45	31,81	34,40	37,19	36,78	32,19	34,44	34,28	38,26	37,67
2021 ...	48,10	52,42	55,46	53,98	55,31	57,47	59,24	58,00	60,78	70,85	67,77	65,61	58,75
2022 ...	73,41	80,49	124,66	107,31	106,53	131,59	120,97	108,51	104,87				
2023 ...													
Hanover													
2005 ...	36,49	36,83	42,17	42,06	39,36	47,26	46,81	51,28	51,47	52,81	47,45	48,07	45,17
2006 ...	47,76	47,30	51,65	53,72	51,37	51,56	55,11	53,10	47,86	48,47	45,91	46,12	49,99
2007 ...	41,50	43,80	44,28	47,49	47,30	48,87	50,65	50,01	53,24	52,62	57,73	59,68	49,76
2008 ...	56,93	60,36	62,55	65,52	75,76	79,92	80,58	68,79	65,89	58,68	52,20	42,66	64,15
2009 ...	46,69	40,12	37,46	42,34	42,47	48,14	43,96	47,94	43,42	46,85	46,72	46,17	44,36
2010 ...	49,16	48,40	51,87
2011	66,87	70,99	71,82	67,31	70,09	70,50	67,32	70,70	74,46	77,16	72,07	(70,29)
2012 ...	75,74	77,61	78,44	76,50	73,74	70,70	74,56	79,78	78,04	80,15	76,46	72,49	76,18
2013 ...	73,08	75,21	72,97	67,48	68,88	69,39	72,34	71,57	72,11	70,90	69,12	68,84	70,99
2014 ...	67,11	67,92	65,70	66,48	67,12	68,03	66,54	67,31	66,48	63,10	58,70	50,05	64,55
2015 ...	45,25	54,43	52,96	55,34	56,14	54,19	52,44	47,74	45,73	44,34	44,27	37,26	49,17
2016 ...	33,56	34,58	38,93	39,68	43,52	43,98	41,56	42,44	41,79	46,74	43,24	50,55	41,71
2017 ...	50,98	51,49	47,52	49,89	45,79	42,69	44,23	44,68	48,11	49,36	50,24	51,71	48,06
2018 ...	53,67	48,85	49,09	53,85	59,08	57,95	56,96	58,07	61,21	64,77	64,58	55,03	56,93
2019 ...	52,93	56,08	56,40	58,03	59,10	53,93	56,33	53,43	58,70	55,53	54,93	56,17	55,96
2020 ...	54,03	50,63	38,03	34,57	32,17	34,97	37,57	37,13	33,17	34,97	35,83	40,00	38,59
2021 ...	48,90	53,23	55,70	54,73	56,13	58,20	59,63	57,73	60,80	72,23	69,23	66,33	59,40
2022 ...	74,63	81,30	123,73	109,67	107,63	131,93	122,10	112,77	110,00				
2023 ...													

5.6.2 Light heating oil
When delivered to consumers in tank trucks, 40 - 50 hl per order, free consumer
Euros/hectolitre, including mineral oil tax and oil storage contribution, excluding value added tax
Reference day 15th of each month

reporting year	reporting month												yearly average
	Jan	Feb	Mar	Apr	May	Jun	Jul	Aug	Sep	Oct	Nov	Dec	
Stuttgart													
2005 ...	35,84	36,27	42,13	41,28	38,80	46,43	46,65	51,28	51,52	52,96	48,33	50,02	45,13
2006 ...	47,07	49,08	51,94	53,57	51,29	51,79	54,65	53,37	48,92	49,29	46,34	46,54	50,32
2007 ...	41,25	43,27	43,34	46,79	45,88	47,39	49,79	49,28	53,19	52,57	57,94	59,73	49,20
2008 ...	57,17	60,10	63,11	65,53	74,65	78,07	79,49	68,67	66,00	59,22	52,99	40,76	63,81
2009 ...	44,40	40,39	36,99	39,67	39,68	45,07	39,77	45,38	42,38	47,35	45,67	44,19	42,58
2010 ...	47,21	46,70	51,08	54,07	54,69	55,35	54,12	52,81	55,11	54,60	56,50	58,70	53,41
2011 ...	62,00	64,75	69,17	68,94	65,04	67,33	68,67	66,22	68,49	71,59	73,96	68,94	(67,93)
2012 ...	72,82	77,00	76,02	73,30	70,67	68,63	71,96	76,19	75,43	78,55	74,87	70,35	73,82
2013 ...	70,94	73,11	69,82	66,74	66,45	67,88	69,19	69,60	70,90	69,24	67,58	66,29	68,98
2014 ...	64,66	65,82	65,26	65,97	66,21	66,73	64,54	64,74	64,83	59,99	58,61	48,55	62,99
2015 ...	43,63	52,89	50,76	52,33	53,99	51,67	49,73	46,84	45,78	45,10	46,52	36,35	47,97
2016 ...	31,57	32,84	36,66	37,61	40,57	40,65	38,80	40,39	39,48	46,95	42,76	48,76	39,75
2017 ...	48,80	49,64	46,31	48,75	45,93	42,28	43,83	43,48	46,78	47,40	49,34	50,57	46,93
2018 ...	52,10	48,83	49,80	53,22	57,14	56,58	55,24	58,21	64,55	67,43	72,22	55,86	57,60
2019 ...	55,30	57,07	56,53	58,50	58,60	54,80	56,43	55,97	60,03	55,63	56,07	56,27	56,77
2020 ...	54,30	51,67	41,83	38,23	35,63	37,03	36,53	35,57	32,90	35,67	35,47	42,17	39,75
2021 ...	47,90	52,50	55,47	54,30	55,37	57,80	59,37	57,40	61,03	74,60	70,93	67,77	59,54
2022 ...	75,20	81,30	123,10	110,10	107,50	120,53	123,40	126,37	121,60				
2023 ...													
Munich													
2005 ...	36,02	36,56	42,49	41,39	39,03	46,94	47,10	52,03	52,24	53,26	48,34	50,11	45,46
2006 ...	47,10	49,51	52,55	53,94	51,51	52,19	54,98	53,86	50,46	51,29	48,17	46,92	51,04
2007 ...	41,12	43,21	43,13	46,17	45,96	46,42	49,03	49,17	53,34	52,78	58,26	59,95	49,05
2008 ...	57,19	60,55	62,56	65,29	74,65	77,76	80,52	69,77	66,81	60,87	54,83	43,30	64,51
2009 ...	46,33	41,84	39,66	42,03	41,85	45,88	42,26	47,12	44,85	48,13	47,10	46,16	44,43
2010 ...	49,30	48,94	52,86	56,12	56,80	56,98	55,81	55,12	56,95	56,64	58,67	59,94	55,34
2011 ...	63,10	66,13	71,25	71,57	67,03	69,19	69,93	68,51	70,61	73,23	75,65	71,90	(69,84)
2012 ...	74,41	79,67	78,03	75,56	73,21	73,42	75,37	78,90	77,17	80,20	77,30	71,84	76,26
2013 ...	72,50	74,09	71,87	69,00	69,16	69,78	71,21	71,06	72,81	71,22	69,13	67,95	70,82
2014 ...	66,72	67,38	67,44	68,29	67,52	68,48	66,12	66,53	66,27	61,93	60,73	50,58	64,83
2015 ...	45,09	54,41	52,40	53,98	55,14	52,12	51,13	48,53	47,75	46,85	47,42	38,33	49,43
2016 ...	33,57	34,82	38,99	39,01	41,91	42,29	41,06	42,37	41,06	47,53	43,83	49,72	41,35
2017 ...	50,03	51,44	48,18	50,35	47,72	45,02	45,18	45,26	47,51	48,57	50,22	51,33	48,40
2018 ...	52,85	50,41	51,25	54,74	57,98	57,83	57,12	59,50	69,22	70,71	76,31	60,77	59,89
2019 ...	60,83	59,83	59,27	60,70	61,78	59,13	58,37	58,20	61,67	57,07	56,77	56,90	59,21
2020 ...	56,02	53,27	46,90	41,53	36,87	37,90	38,03	36,63	34,17	36,63	36,73	42,83	41,46
2021 ...	48,87	54,17	56,63	54,83	56,80	58,53	61,03	59,17	62,43	74,87	73,43	67,90	60,72
2022 ...	75,50	82,07	128,33	108,13	108,17	122,53	132,23	133,07	126,53				
2023 ...													
Berlin													
2005 ...	36,35	36,69	42,07	41,84	39,05	47,06	46,75	51,26	52,37	52,67	47,55	48,11	45,15
2006 ...	47,62	48,26	52,55	54,16	51,93	51,99	55,31	53,59	49,55	49,98	46,24	46,22	50,62
2007 ...	41,77	43,89	44,48	47,75	47,07	48,59	50,21	49,88	53,47	52,87	58,21	59,63	49,82
2008 ...	57,28	60,98	62,92	65,45	74,90	78,29	79,69	69,25	67,69	59,21	51,94	41,69	64,11
2009 ...	46,22	40,24	37,40	40,64	41,37	47,67	41,19	46,02	43,78	47,47	46,80	46,28	43,76
2010 ...	49,32	49,05	53,09	56,07	56,94	55,81	54,76	53,61	56,13	55,00	57,24	59,88	54,74
2011 ...	63,75	66,22	70,22	70,55	66,22	68,83	69,89	67,02	69,20	72,40	75,08	71,05	(69,20)
2012 ...	74,70	77,26	77,83	75,65	73,20	69,54	73,55	77,50	77,10	79,75	75,86	71,95	75,32
2013 ...	72,15	74,85	71,68	68,35	68,72	68,04	70,45	71,23	72,14	70,13	68,20	67,24	70,27
2014 ...	66,37	67,60	65,46	67,19	66,73	67,59	65,86	66,77	66,21	61,76	59,51	49,92	64,25
2015 ...	44,17	53,41	51,26	54,26	55,51	53,37	50,87	46,43	45,42	44,25	43,99	35,69	48,22
2016 ...	32,19	33,20	37,31	38,65	42,21	43,02	40,84	41,94	41,15	46,66	43,10	49,41	40,81
2017 ...	49,58	49,89	46,61	49,42	45,93	43,04	43,98	43,96	46,93	47,51	49,35	50,90	47,26
2018 ...	52,53	48,84	50,16	53,88	58,55	56,66	56,27	58,03	61,40	68,57	67,23	56,17	57,36
2019 ...	54,58	57,54	56,98	58,40	59,69	55,41	56,74	53,95	58,03	55,79	55,29	56,34	56,56
2020 ...	54,54	51,33	39,33	36,05	35,20	35,93	37,69	37,38	33,11	35,73	35,76	40,01	39,34
2021 ...	49,01	53,45	56,79	55,11	56,68	58,53	60,38	59,25	62,35	72,88	71,31	68,21	60,33
2022 ...	76,54	82,10	137,95	111,39	107,63	127,90	120,34	114,10	112,54				
2023 ...													

5.6.2 Light heating oil
When delivered to consumers in tank trucks, 40 - 50 hl per order, free consumer
Euros/hectolitre, including mineral oil tax and oil storage contribution, excluding value added tax
Reference day 15th of each month

reporting year	reporting month												yearly average
	Jan	Feb	Mar	Apr	May	Jun	Jul	Aug	Sep	Oct	Nov	Dec	
Rostock													
2005 ...	35,94	36,22	41,72	41,54	38,82	46,77	46,26	50,84	51,38	52,44	47,08	47,42	44,70
2006 ...	47,14	46,74	51,90	53,53	51,62	51,54	54,90	53,10	47,98	48,01	45,19	46,17	49,82
2007 ...	41,48	43,69	44,29	47,47	47,19	48,79	50,42	49,77	52,94	52,62	57,74	59,58	49,67
2008 ...	56,66	60,12	62,78	65,78	75,70	79,16	79,41	67,94	66,42	56,24	50,71	40,73	63,47
2009 ...	43,10	38,90	36,40	40,27	40,27	46,22	42,25	46,18	42,96	46,52	46,22	45,73	42,92
2010 ...	48,84	48,41	52,51	55,56	56,64	56,04	54,20	53,39	55,65	54,89	57,01	60,06	54,43
2011 ...	62,39
2012
2013
2014
2015
2016
2017
2018
2019
2020
2021
2022
2023
Magdeburg													
2005 ...	36,87	36,97	42,52	42,33	39,62	47,61	47,49	51,72	52,35	53,36	48,03	48,46	45,61
2006 ...	47,98	47,58	52,68	54,42	52,36	52,35	55,33	53,91	48,95	48,86	45,94	46,92	50,61
2007 ...	42,19	44,56	45,09	48,35	47,81	49,62	51,20	50,48	53,67	53,39	58,67	60,07	50,43
2008 ...	57,60	61,05	63,78	66,68	76,22	79,46	80,60	69,44	66,43	58,43	52,34	43,28	64,61
2009 ...	47,03	41,20	38,59	42,96	42,98	48,40	43,75	48,08	44,92	48,58	48,03	47,54	45,17
2010 ...	50,66	50,36	54,55	57,57	58,47	57,40	56,27	55,04	57,59	56,57	58,89	61,60	56,25
2011 ...	65,05	65,97	69,82	70,22	66,40	68,76	69,95	67,00	69,65	72,42	75,21	70,65	(69,26)
2012 ...	74,89	77,48	77,96	75,91	73,11	69,63	73,94	78,35	77,05	79,74	75,77	72,00	75,49
2013 ...	72,56	75,11	72,41	67,34	68,31	68,90	70,94	71,00	72,07	70,72	68,38	67,64	70,45
2014 ...	66,36	67,80	65,90	67,40	67,24	68,27	66,14	66,20	66,14	61,71	59,73	50,43	64,44
2015 ...	45,22	54,30	51,65	54,74	55,53	53,55	51,29	46,50	45,30	44,05	44,02	36,27	48,54
2016 ...	32,19	33,64	37,47	38,59	43,16	43,29	41,50	42,01	41,13	46,55	42,87	49,56	41,00
2017 ...	48,92	49,88	46,81	49,63	46,62	42,64	43,89	44,70	47,50	48,60	48,91	49,64	47,31
2018 ...	52,75	49,37	49,94	54,12	59,09	57,64	56,84	58,54	61,99	64,86	65,51	54,86	57,13
2019 ...	52,86	56,92	56,76	58,39	59,36	54,36	56,39	54,42	59,09	55,69	55,22	56,92	56,37
2020 ...	54,62	51,16	38,26	35,16	34,66	36,39	38,59	38,06	33,89	36,19	35,96	39,59	39,38
2021 ...	49,32	54,16	56,59	55,39	56,49	58,76	60,52	58,99	61,99	71,69	69,16	66,64	59,98
2022 ...	75,50	81,94	127,69	108,89	107,46	131,70	122,32	112,29	109,52				
2023 ...													
Dresden													
2005 ...	36,74	36,96	42,69	42,28	39,60	47,49	47,31	51,69	52,98	53,17	48,06	48,48	45,62
2006 ...	47,47	47,82	52,60	54,39	52,43	52,22	55,59	53,80	50,50	50,82	46,30	46,82	50,90
2007 ...	42,09	44,30	44,82	48,07	47,62	49,01	50,76	50,22	53,67	53,36	58,43	59,86	50,18
2008 ...	57,47	60,86	64,41	66,60	75,93	79,51	79,55	69,95	67,17	59,29	52,70	42,09	64,63
2009 ...	45,74	39,61	37,62	41,51	41,06	48,84	41,72	48,21	44,99	48,93	47,75	47,26	44,44
2010 ...	50,62	50,41	54,25	57,30	58,63	56,31	55,82	54,93	57,40	56,40	58,48	60,94	55,96
2011 ...	64,28	66,88	70,65	71,48	67,26	69,83	70,33	67,76	70,06	72,55	75,81	71,98	(69,91)
2012 ...	75,52	78,36	78,85	76,27	74,28	70,87	74,63	78,65	77,80	80,32	77,35	72,47	76,28
2013 ...	73,24	76,26	72,77	69,43	69,63	70,18	71,83	72,05	73,16	71,25	69,51	68,86	71,51
2014 ...	67,87	68,51	66,60	68,33	68,18	69,12	66,79	66,83	66,54	62,34	60,05	50,36	65,13
2015 ...	45,22	54,96	52,38	55,46	56,51	54,74	51,78	47,59	46,33	45,27	45,04	37,14	49,37
2016 ...	33,54	34,63	38,34	39,49	43,83	43,91	41,87	42,80	42,07	47,48	43,79	50,20	41,83
2017 ...	49,74	50,75	47,70	50,24	47,30	44,52	44,85	44,78	47,83	48,61	50,63	51,35	48,19
2018 ...	53,27	49,91	50,75	54,45	59,31	57,74	56,92	58,76	66,28	68,21	70,52	59,71	58,82
2019 ...	54,97	56,83	56,63	58,63	59,80	56,00	56,60	54,57	58,97	56,03	55,53	57,10	56,81
2020 ...	54,27	51,40	41,63	36,40	34,68	35,58	37,88	37,50	33,73	35,83	35,55	39,70	39,51
2021 ...	49,35	53,70	56,80	55,37	56,63	59,07	60,92	59,40	62,60	72,78	70,20	68,38	60,43
2022 ...	76,03	81,98	138,30	110,33	108,93	130,50	126,33	119,93	119,50				
2023 ...													

5.6.3 Light heating oil

When delivered to wholesale trader, at least 500 t per order, ex stock

Euros/hectolitre, including mineral oil tax and oil storage contribution, excluding value added tax

Reference day 15th of each month

reporting year	reporting month												yearly average
	Jan	Feb	Mar	Apr	May	Jun	Jul	Aug	Sep	Oct	Nov	Dec	
Kiel													
2005 ...	33,24	33,34	38,27	38,50	35,83	44,02	43,62	47,57	48,66	50,26	44,36	44,88	41,88
2006 ...	45,01	44,16	47,25	50,79	48,82	48,77	51,93	50,25	44,69	44,97	42,68	42,72	46,84
2007 ...	38,78	40,51	41,96	44,63	44,21	46,50	47,59	46,89	49,68	49,36	54,46	55,39	46,66
2008 ...	53,70	57,69	60,61	63,00	72,55	75,61	76,81	65,36	62,76	54,34	47,91	38,49	60,74
2009 ...	39,84	36,18	33,51	37,55	37,74	42,79	38,76	43,07	40,47	43,95	43,46	42,87	40,02
2010 ...	45,93	45,94	50,03	53,22	53,74	53,90	51,85	50,85	53,42	52,18	55,01	57,05	51,93
2011 ...	60,03
2012
2013
2014
2015
2016
2017
2018
2019
2020
2021
2022
2023
Hamburg													
2005 ...	33,21	33,30	38,25	38,47	35,80	43,94	43,97	47,54	48,62	50,21	44,32	44,84	41,87
2006 ...	44,85	44,07	47,20	50,53	48,75	48,66	51,80	50,12	44,63	44,86	42,68	42,67	46,74
2007 ...	38,67	40,41	41,80	44,54	44,07	46,37	47,13	46,73	49,53	49,22	54,37	55,41	46,52
2008 ...	53,64	57,59	60,57	62,90	72,45	75,51	77,08	65,43	62,80	54,68	47,94	38,35	60,75
2009 ...	39,78	36,06	33,40	37,44	37,62	42,67	38,34	42,95	40,36	43,84	43,34	42,76	39,88
2010 ...	45,77	45,79	49,91	52,81	53,65	53,44	51,49	50,39	52,93	51,55	54,18	56,49	51,53
2011 ...	60,03	61,61	66,79	66,99	63,00	65,84	66,58	63,23	66,13	68,84	71,44	67,36	(65,65)
2012 ...	71,94	72,73	74,78	72,94	70,23	65,88	70,47	74,82	73,72	76,13	72,31	68,38	72,03
2013 ...	69,23	71,77	68,41	63,97	65,00	65,54	67,59	67,94	68,61	66,67	65,42	64,94	67,09
2014 ...	63,56	64,84	62,70	64,18	64,39	65,29	62,95	62,99	62,70	58,01	56,16	46,17	61,16
2015 ...	41,45	51,00	48,68	51,21	52,40	50,31	48,18	43,36	41,80	40,56	40,52	31,99	45,12
2016 ...	28,71	30,23	33,57	34,70	39,60	39,96	37,65	38,28	37,47	42,84	39,65	46,13	37,40
2017 ...	45,44	46,32	43,34	46,16	42,56	38,88	40,30	41,00	44,18	45,58	46,42	47,38	43,96
2018 ...	49,58	46,01	46,77	50,81	55,95	54,85	54,21	55,57	57,73	60,14	58,20	50,03	53,32
2019 ...	49,11	53,24	53,12	55,01	56,21	50,08	52,32	50,55	53,29	52,01	51,71	53,17	52,49
2020 ...	51,14	47,50	34,51	30,04	28,37	31,86	34,64	34,19	29,89	32,12	31,87	35,75	35,16
2021 ...	45,85	50,10	53,01	51,56	52,77	55,29	57,11	56,01	58,46	68,14	65,65	62,69	56,39
2022 ...	71,12	78,59	121,61	105,41	104,53	129,52	117,60	107,42	102,28				
2023 ...													
Hanover													
2005 ...	33,77	33,88	38,85	38,96	35,91	44,47	44,37	48,04	49,26	50,66	44,77	45,44	42,37
2006 ...	45,43	45,07	47,58	51,18	49,13	49,10	52,41	50,73	45,14	45,40	43,18	43,09	47,29
2007 ...	39,19	40,95	42,39	45,05	44,59	46,64	47,97	47,16	50,00	49,79	54,92	55,72	47,03
2008 ...	54,17	58,18	61,09	63,39	73,00	75,87	77,31	65,90	63,28	54,72	48,31	38,48	61,14
2009 ...	40,46	36,51	33,94	38,02	38,26	43,31	39,33	43,58	40,88	44,32	43,87	43,29	40,48
2010 ...	46,40	46,33	50,38
2011	61,77	67,34	67,68	63,35	66,05	67,00	63,46	66,70	69,86	72,23	68,00	(66,16)
2012 ...	72,53	74,16	75,35	73,40	70,66	66,86	71,35	75,68	74,54	77,22	73,25	68,87	72,82
2013 ...	69,93	72,62	69,23	64,78	65,89	66,29	68,49	68,42	69,42	67,79	66,01	65,20	67,84
2014 ...	63,90	65,13	63,48	64,78	64,84	66,01	63,69	63,73	63,53	59,06	56,84	46,63	61,80
2015 ...	42,04	51,64	49,23	51,87	53,09	51,09	48,97	44,26	42,63	41,44	41,22	32,90	45,87
2016 ...	29,57	31,06	34,58	35,95	40,25	40,40	38,25	39,23	38,32	43,63	40,24	47,03	38,21
2017 ...	46,26	47,29	44,26	47,20	43,57	39,85	41,54	41,99	45,16	46,62	47,70	48,34	44,98
2018 ...	50,04	46,94	47,08	51,53	56,28	55,26	54,12	56,06	59,79	61,14	63,50	52,15	54,49
2019 ...	50,30	53,93	54,13	55,50	56,73	51,88	53,82	51,66	54,96	52,90	52,59	53,88	53,52
2020 ...	51,57	48,14	35,48	31,43	29,34	32,35	35,03	34,59	30,58	33,00	33,11	37,50	36,01
2021 ...	46,30	50,88	53,45	52,00	53,28	55,63	56,91	55,68	58,82	69,14	66,39	63,21	56,81
2022 ...	71,78	79,27	122,06	106,61	104,85	128,50	118,02	109,97	105,56				
2023 ...													

5.7 Liquefied gas

reporting year	reporting month												yearly average
	Jan	Feb	Mar	Apr	May	Jun	Jul	Aug	Sep	Oct	Nov	Dec	
Consumer price index													
CC13-0722301100 Liquefied petroleum gas													
2005 ...	-	-	-	-	-	-	-	-	-	-	-	-	-
2006 ...	-	-	-	-	-	-	-	-	-	-	-	-	-
2007 ...	-	-	-	-	-	-	-	-	-	-	-	-	-
2008 ...	-	-	-	-	-	-	-	-	-	-	-	-	-
2009 ...	-	-	-	-	-	-	-	-	-	-	-	-	-
2010 ...	101,6	104,8	106,2	106,3	105,9	105,8	105,6	105,8	106,1	107,4	109,4	118,4	106,9
2011 ...	123,8	124,5	125,0	126,1	126,5	125,8	125,2	125,0	125,2	124,5	123,9	123,8	124,9
2012 ...	125,0	129,1	133,8	134,0	132,7	130,8	127,9	128,1	132,7	133,4	134,2	134,4	131,3
2013 ...	133,2	131,8	130,7	128,3	126,0	124,3	123,2	123,0	122,1	121,8	120,9	124,8	125,8
2014 ...	124,9	123,6	122,3	120,9	119,6	118,5	117,4	117,0	116,3	115,5	114,5	112,5	118,6
2015 ...	109,0	104,4	102,8	101,8	101,5	100,5	99,3	98,2	96,6	95,5	95,4	95,2	100,0
2016 ...	94,1	92,0	90,6	89,7	89,4	89,2	88,7	88,0	88,1	88,1	89,0	89,7	89,7
2017 ...	91,9	94,0	96,0	96,1	95,3	94,6	93,8	93,9	94,7	96,0	97,4	98,9	95,2
2018 ...	99,9	99,8	99,2	99,0	98,9	99,5	100,1	100,6	101,4	103,1	104,2	104,0	100,8
2019 ...	104,1	103,3	102,7	102,8	102,5	101,9	101,1	100,2	99,4	99,0	98,6	99,0	101,2
2020 ...	102,1	103,5	102,3	100,2	98,0	96,6	95,6	95,0	94,5	93,8	93,6	93,7	97,4
2021 ...	104,7	109,6	111,6	114,4	115,0	114,7	116,5	118,0	119,6	127,1	136,7	140,8	119,1
2022 ...	145,8	148,4	163,5	184,1	186,4	172,4	164,7	163,5	175,9				
2023 ...													

5.8.1 Electricity - Indices

reporting year	reporting month												yearly average
	Jan	Feb	Mar	Apr	May	Jun	Jul	Aug	Sep	Oct	Nov	Dec	
Producer price index													
GP09-3513 system usage fee electricity distribution													
2005 ...	82,9	82,9	83,0	83,0	83,0	83,1	83,1	83,1	83,1	83,1	83,1	83,1	83,0
2006 ...	82,9	82,9	82,9	82,9	83,4	83,4	83,2	83,2	81,9	79,0	76,6	76,2	81,5
2007 ...	76,1	76,5	76,2	75,4	74,9	74,9	74,9	74,9	74,7	74,7	74,7	74,6	75,2
2008 ...	72,1	70,8	70,1	69,6	69,2	68,8	68,8	68,8	68,8	68,8	68,8	68,8	69,5
2009 ...	68,8	69,6	70,4	72,6	73,5	73,5	73,8	73,8	73,8	73,8	73,8	73,8	72,6
2010 ...	74,0	73,5	73,5	73,5	73,5	73,5	73,5	73,5	73,5	73,5	73,5	73,5	73,5
2011 ...	73,4	73,4	73,4	73,4	73,4	73,4	73,4	73,4	73,4	73,4	73,4	73,4	73,4
2012 ...	78,2	78,2	78,2	78,2	78,2	78,2	78,2	78,2	78,2	78,2	78,2	78,2	78,2
2013 ...	88,0	88,0	88,0	88,0	88,0	88,0	88,0	88,0	88,0	88,0	88,0	88,0	88,0
2014 ...	92,9	92,9	92,9	92,9	92,9	92,9	92,9	92,9	92,9	92,9	92,9	92,9	92,9
2015 ...	100,0	100,0	100,0	100,0	100,0	100,0	100,0	100,0	100,0	100,0	100,0	100,0	100,0
2016 ...	106,6	106,6	106,6	106,6	106,6	106,6	106,6	106,6	106,6	106,6	106,6	106,6	106,6
2017 ...	128,1	128,1	128,1	128,1	128,1	128,1	128,1	128,1	128,1	128,1	128,1	128,1	128,1
2018 ...	125,9	125,9	125,9	125,9	125,9	125,9	125,9	125,9	125,9	125,9	125,9	125,9	125,9
2019 ...	127,2	127,2	127,2	127,2	127,2	127,2	127,2	127,2	127,2	127,2	127,2	127,2	127,2
2020 ...	136,3	136,3	136,3	136,3	136,3	136,3	136,3	136,3	136,3	136,3	136,3	136,3	136,3
2021 ...	135,8	135,8	135,8	135,8	135,8	135,8	135,8	135,8	135,8	135,8	135,8	135,8	135,8
2022 ...	144,1	144,1	144,1	144,1	144,1	144,1	144,1	144,1	144,1	144,1	144,1	144,1	144,1
2023 ...													
GP09-3514 system usage fee electricity trade													
2005 ...	106,6	106,6	106,7	106,7	106,7	106,3	106,2	106,2	106,2	106,2	106,2	106,2	106,4
2006 ...	105,5	105,5	105,5	105,5	105,2	105,2	105,2	105,2	102,9	99,2	94,7	92,2	102,7
2007 ...	90,3	90,0	89,5	88,6	87,9	87,9	87,9	87,9	87,3	87,3	87,3	86,8	88,2
2008 ...	83,6	82,0	80,2	79,4	78,5	78,1	77,9	77,9	77,9	77,9	77,9	77,9	79,1
2009 ...	78,1	78,8	79,8	81,1	81,6	81,6	81,6	81,6	81,6	81,6	81,6	81,6	80,9
2010 ...	90,1	89,8	89,8	89,8	89,8	89,8	89,8	89,8	89,8	89,8	89,8	89,8	89,8
2011 ...	90,9	91,0	91,0	91,0	91,0	91,0	91,0	91,0	91,0	91,0	91,0	91,0	91,0
2012 ...	92,6	92,6	92,6	92,6	92,6	92,6	92,6	92,6	92,6	92,7	92,7	92,7	92,6
2013 ...	96,2	96,2	96,2	96,2	96,2	96,2	96,2	96,2	96,2	96,2	96,2	96,2	96,2
2014 ...	97,8	97,8	97,8	97,8	97,8	97,8	97,8	97,8	97,8	97,8	97,8	97,8	97,8
2015 ...	100,0	100,0	100,0	100,0	100,0	100,0	100,0	100,0	100,0	100,0	100,0	100,0	100,0
2016 ...	104,0	104,0	104,0	104,0	104,0	104,0	104,0	104,0	104,0	104,0	104,0	104,0	104,0
2017 ...	114,8	114,8	114,8	114,8	114,8	114,8	114,8	114,8	114,8	114,8	114,8	114,8	114,8
2018 ...	111,2	111,2	111,2	111,2	111,2	111,2	111,2	111,2	111,2	111,2	111,2	111,2	111,2
2019 ...	113,9	113,9	113,9	113,9	113,9	113,9	113,9	113,9	113,9	113,9	113,9	113,9	113,9
2020 ...	120,0	120,0	120,0	120,0	120,0	120,0	120,0	120,0	120,0	120,0	120,0	120,0	120,0
2021 ...	121,5	121,5	121,5	121,5	121,5	121,5	121,5	121,5	121,5	121,5	121,5	121,5	121,5
2022 ...	126,8	126,8	126,8	126,8	126,8	126,8	126,8	126,8	126,8	126,8	126,8	126,8	126,8
2023 ...													

5.8.2 Electricity

Supply to households, annual consumption 2.500 kWh to under 5.000 kWh

Cents/kWh, including taxes, levies and VAT

reference period	Germany	Albania	Belgium	Bosnia and Herzegovina	Bulgaria	Denmark	Estonia	Finland	France
1st half 2008	21,48	-	19,72	-	7,11	26,35	8,14	12,23	12,13
2nd half 2008	21,95	-	21,52	-	8,23	27,85	8,50	12,73	12,03
1st half 2009	22,82	-	19,16	-	8,23	26,99	9,22	12,96	12,06
2nd half 2009	22,94	-	18,64	-	8,18	25,55	9,20	12,89	12,07
1st half 2010	23,75	-	19,59	7,41	8,13	26,70	9,70	13,25	12,83
2nd half 2010	24,38	-	19,74	7,35	8,30	27,08	10,04	13,70	13,50
1st half 2011	25,28	11,52	21,36	7,45	8,26	29,08	9,73	15,40	13,83
2nd half 2011	25,31	11,57	21,19	7,85	8,74	29,76	10,42	15,73	14,22
1st half 2012	25,95	11,63	23,27	7,98	8,46	29,97	10,96	15,49	13,92
2nd half 2012	26,76	11,67	22,23	8,04	9,55	29,72	11,23	15,59	15,01
1st half 2013	29,19	11,56	21,73	8,03	9,24	30,00	13,51	15,78	15,24
2nd half 2013	29,21	11,54	22,15	7,96	8,82	29,36	13,67	15,59	15,96
1st half 2014	29,81	11,56	20,97	7,91	8,32	30,42	13,07	15,63	15,85
2nd half 2014	29,74	11,60	20,43	8,05	8,95	30,35	13,25	15,38	17,02
1st half 2015	29,51	8,12	21,26	8,12	9,42	30,68	13,02	15,52	16,76
2nd half 2015	29,46	8,19	23,52	8,28	9,57	30,42	12,91	15,30	16,82
1st half 2016	29,69	8,24	25,44	8,31	9,56	30,88	12,08	15,41	16,85
2nd half 2016	29,77	8,35	27,45	8,44	9,38	30,84	12,38	15,45	17,11
1st half 2017	30,48	8,44	28,57	8,59	9,55	30,49	12,07	15,81	17,04
2nd half 2017	30,48	8,56	28,77	8,64	9,83	30,10	13,19	15,99	17,56
1st half 2018	29,87	-	28,24	8,64	9,79	31,26	13,48	16,12	17,48
2nd half 2018	30,00	9,10	29,36	8,71	10,05	31,23	14,18	16,98	17,99
1st half 2019	30,88	9,20 ^e	28,39	8,73	9,97	29,84	13,57	17,34	17,78
2nd half 2019	28,78	9,33	28,60	8,75	9,58	29,24	14,11	17,83	19,13
1st half 2020	30,43	9,22	27,92	8,70	9,97	28,33	12,36	17,40	18,93
2nd half 2020	30,06	9,20	27,02	9,01	9,82	28,19	12,91	17,73	19,58
1st half 2021	31,93	-	27,02	8,75	10,24	29,00	13,24	17,67	19,46
2nd half 2021	32,34	9,37	29,94	8,68	10,91	34,48	19,39	18,40	20,22
1st half 2022	32,79	-	33,77	8,87	10,93	45,59	20,56	19,45	20,86

reference period	Georgia	Greece	Ireland	Iceland	Italy	Croatia	Latvia	Liechtenstein	Lithuania
1st half 2008	-	10,47	17,69	-	20,31	9,90	8,42	-	8,60
2nd half 2008	-	10,99	20,33	-	22,27	11,84	10,03	-	8,65
1st half 2009	-	11,54	20,30	-	20,98	11,51	10,52	-	9,51
2nd half 2009	-	10,32	18,55	-	19,97	11,64	10,54	-	9,26
1st half 2010	-	11,81	18,04	-	19,65	11,51	10,49	-	11,56
2nd half 2010	-	12,11	18,75	-	19,20	11,53	10,48	-	12,16
1st half 2011	-	12,50	19,01	-	19,87	11,37	11,68	-	12,14
2nd half 2011	-	12,38	20,86	-	20,65	11,46	13,42	-	12,21
1st half 2012	-	13,91	21,55	11,10	21,32	12,08	13,82	-	12,60
2nd half 2012	-	14,18	22,89	11,64	22,97	13,84	13,69	-	12,68
1st half 2013	-	15,63	22,95	10,53	22,92	13,72	13,78	-	13,70
2nd half 2013	-	16,97	24,05	10,72	23,23	13,50	13,58	-	13,91
1st half 2014	-	17,67	24,07	11,33	24,46	13,12	13,65	15,31	13,30
2nd half 2014	-	17,85	25,36	11,58	23,38	13,24	13,01	15,48	13,19
1st half 2015	-	17,67	24,26	11,97	24,50	13,17	16,35	18,41	12,56
2nd half 2015	-	17,71	24,54	12,65	24,28	13,12	16,50	18,03	12,43
1st half 2016	-	17,16	23,20	13,12	23,42	13,11	16,28	17,28	12,31
2nd half 2016	-	17,23	23,38	14,78	22,61	13,31	16,24	17,47	11,71
1st half 2017	-	17,11	23,05	15,98	21,32	11,96	15,86	17,24	11,16
2nd half 2017	-	16,20	23,55	15,18	20,80	12,36	15,82	16,18	11,07
1st half 2018	6,85	16,72	23,69	15,45	20,67	13,11	15,31	19,16	10,97
2nd half 2018	7,41	16,46	25,39	14,57	21,61	13,21	15,11	19,62	10,97
1st half 2019	8,09	15,95	24,23	14,29	23,01	13,21	16,29	19,85	12,55
2nd half 2019	6,19	15,51	25,46	14,31	23,41	13,24	16,40	20,48	12,54
1st half 2020	6,63	16,74	24,13	13,41	22,26	13,01	14,20	21,15	14,26
2nd half 2020	5,68	16,41	26,16	12,48	21,53	13,07	14,32	20,78	13,21
1st half 2021	6,31	16,80	25,55	13,55	22,59	12,91	14,03	20,71	13,48
2nd half 2021	6,6	19,74	29,74	13,87	23,60	13,13	18,86	21,21	14,77
1st half 2022	7,47	23,05	25,93	15,30	31,15	13,54	22,36	22,01	14,97

5.8.2 Electricity

Supply to households, annual consumption 2.500 kWh to under 5.000 kWh

Cents/kWh, including taxes, levies and VAT

reference period	Luxembourg	Malta	Macedonia	Moldova	Montenegro	Netherlands	Norway	Austria	Poland
1st half 2008	16,45	9,93	-	-	-	17,69	16,39	17,79	12,59
2nd half 2008	16,09	15,36	-	-	-	17,98	17,00	17,72	12,95
1st half 2009	18,82	17,08	-	-	-	19,79	15,65	19,09	11,31
2nd half 2009	18,82	15,13	-	-	-	19,06	15,63	19,09	12,91
1st half 2010	17,26	16,47	-	-	-	17,67	20,27	19,67	13,41
2nd half 2010	17,47	16,53	-	-	-	17,89	19,07	19,30	13,82
1st half 2011	16,78	16,51	-	-	8,70	18,02	21,33	19,86	14,71
2nd half 2011	16,62	16,66	-	-	8,52	18,01	18,70	19,65	13,51
1st half 2012	16,96	16,73	-	-	9,10	18,50	18,81	19,75	14,18
2nd half 2012	17,06	16,78	7,91	-	9,50	18,64	17,75	20,24	15,29
1st half 2013	16,65	16,64	8,10	-	9,56	18,98	19,09	20,82	14,80
2nd half 2013	16,46	16,89	7,80	-	9,88	19,05	17,78	20,18	14,37
1st half 2014	17,38	14,74	7,85	-	9,85	18,41	16,53	20,21	14,21
2nd half 2014	17,38	12,48	8,23	-	9,88	18,01	16,61	19,87	14,08
1st half 2015	17,67	12,57	8,26	8,19	9,82	19,86	16,14	20,09	14,44
2nd half 2015	17,67	12,69	8,35	8,81	9,88	18,46	14,34	19,83	14,18
1st half 2016	16,98	12,57	8,22	9,62	9,56	16,20	15,15	20,34	13,32
2nd half 2016	16,98	12,74	8,28	9,23	9,70	15,92	16,31	20,10	13,52
1st half 2017	16,15	13,28	8,20	9,77	9,83	15,62	16,42	19,50	14,46
2nd half 2017	16,18	12,98	8,11	10,13	10,03	15,56	16,05	19,78	14,51
1st half 2018	16,71	12,85	7,81	10,20	10,24	17,06	17,51	19,66	14,10
2nd half 2018	16,91	13,07	7,87	10,29	10,30	17,18	19,07	20,12	13,96
1st half 2019	17,98	12,90	7,83	9,36	10,32	20,67	18,67	20,34	13,43
2nd half 2019	17,99	13,04	7,90	10,19	10,28	20,55	17,44	20,74	13,76
1st half 2020	19,86	12,84	7,82	10,68	9,88	14,27	13,55	21,11	14,75
2nd half 2020	19,85	13,01	8,33	9,93	9,99	13,61	13,22	21,67	15,10
1st half 2021	19,88	12,85	8,41	8,51	9,80	12,81	18,26	22,16	15,48
2nd half 2021	19,89	13,18	8,40	8,88	9,74	14,49	22,06	22,85	15,74
1st half 2022	20,17	12,93	9,40	11,72	9,61	5,95	19,94	22,49	14,64

reference period	Portugal	Romania	Serbia	Sweden	Slovakia	Slovenia	Spain	Czech Republic	Turkey
1st half 2008	14,82	10,61	-	16,98	14,21	11,47	13,66	14,01	9,98
2nd half 2008	15,25	11,03	-	17,46	15,26	11,56	15,57	14,28	12,22
1st half 2009	15,08	9,76	-	16,02	15,40	13,46	15,77	14,55	11,44
2nd half 2009	15,94	9,79	-	16,46	15,60	13,41	16,84	15,33	11,79
1st half 2010	15,84	10,31	-	18,39	15,20	14,01	17,28	14,96	13,42
2nd half 2010	16,66	10,52	-	19,58	16,37	14,26	18,51	15,49	13,74
1st half 2011	16,54	10,82	-	20,92	16,82	14,41	19,81	16,59	12,18
2nd half 2011	18,81	10,85	-	20,44	17,10	14,92	20,88	16,27	11,45
1st half 2012	19,93	10,50	-	20,27	17,16	15,42	21,90	16,64	13,10
2nd half 2012	20,63	10,75	-	20,83	17,22	15,42	22,75	16,68	14,70
1st half 2013	20,81	13,23	5,64	21,01	16,98	16,10	22,28	16,81	14,95
2nd half 2013	21,31	12,79	6,08	20,46	16,78	16,57	22,73	16,45	13,14
1st half 2014	21,75	12,90	6,07	19,67	15,07	16,30	21,65	13,88	11,92
2nd half 2014	22,31	12,48	5,96	18,67	15,23	16,32	23,67	13,79	13,10
1st half 2015	22,79	13,03	5,75	18,51	15,06	15,89	23,09	13,85	13,60
2nd half 2015	22,85	13,19	6,45	18,74	15,17	16,31	23,70	14,08	12,22
1st half 2016	23,50	12,60	6,41	18,94	14,23	16,18	21,85	14,20	12,67
2nd half 2016	22,98	12,33	6,54	19,62	15,37	16,29	22,84	14,21	12,05
1st half 2017	22,84	11,98	6,64	19,36	14,35	16,09	22,96	14,38	10,48
2nd half 2017	22,30	12,89	6,95	19,93	14,42	16,13	21,77	14,88	9,59
1st half 2018	22,46	13,33	7,05	18,91	15,66	16,13	23,83	15,73	9,04
2nd half 2018	22,93	13,17	7,09	19,90	14,62	16,38	24,77	15,86	8,57
1st half 2019	21,50	13,58	7,06	20,58	15,77	16,34	24,03	17,48	8,47
2nd half 2019	21,81	14,21	7,21	20,76	15,85	16,66	23,94	17,70	10,43
1st half 2020	21,20	14,59	7,38	18,26 ^e	16,86	14,48	22,39	18,41	9,95
2nd half 2020	21,33	14,49	7,37	17,18 ^e	17,24	16,94	22,98	17,95	8,22
1st half 2021	20,89	15,36	7,91	21,14 ^e	16,68	16,62	23,23	18,02	8,34
2nd half 2021	21,70	16,02	8,11	26,04 ^e	16,24	17,11	28,16	18,83	7,88
1st half 2022	20,67	23,62	8,08	25,25	17,96	13,9	30,71	30,59	8,66

5.8.2 Electricity

Supply to households, annual consumption 2.500 kWh to under 5.000 kWh

Cents/kWh, including taxes, levies and VAT

reference period	Ukraine	Hungary	United Kingdom	Cyprus	Kosovo
1st half 2008	-	15,48	14,58	17,80	-
2nd half 2008	-	15,53	16,03	20,40	-
1st half 2009	-	14,83	14,66	15,58	-
2nd half 2009	-	16,62	14,07	16,42	-
1st half 2010	-	17,01	13,86	18,58	-
2nd half 2010	-	15,74	14,49	20,21	-
1st half 2011	-	16,82	14,33	20,50	-
2nd half 2011	-	15,53	15,84	24,13	-
1st half 2012	-	15,49	16,82	27,81	-
2nd half 2012	-	16,18	17,85	29,09	-
1st half 2013	-	13,97	17,41	27,60	5,64
2nd half 2013	-	13,26	17,97	24,81	5,58
1st half 2014	-	12,02	19,18	22,91	5,52
2nd half 2014	-	11,46	20,13	23,56	5,86
1st half 2015	-	11,27	21,25	19,57	6,25
2nd half 2015	-	11,45	21,83	18,38	6,14
1st half 2016	2,49p	11,14	19,51	15,27	5,90
2nd half 2016	3,20p	11,25	18,31	16,21	5,92
1st half 2017	3,93	11,25	17,66	18,63	6,62
2nd half 2017	3,83	11,34	18,56	18,26	6,54
1st half 2018	4,10	11,23	18,87	18,93	6,33
2nd half 2018	4,10	11,18	20,24	21,83	6,38
1st half 2019	4,42	11,20	21,22	22,03	6,00
2nd half 2019	4,87	10,97	22,10	22,36	6,05
1st half 2020	4,66	10,31	22,03	21,33	6,05
2nd half 2020	3,96	10,09	-	16,98	6,08
1st half 2021	4,85	10,03	-	19,76	6,05
2nd half 2021	-	10,01	-	23,04	6,07
1st half 2022	-	9,48	-	26,07	6,11

Source: Eurostat, Energy Statistics - prices (New methodology from 2007 onwards)

5.8.3 Electricity

Supply to the industry, annual consumption 2.000 MWh to under 20.000 MWh

Cents/kWh, including excise duties, excluding value added tax

reference period	Germany	Albania	Belgium	Bosnia and Herzegovina	Bulgaria	Denmark	Estonia	Finland	France
1st half 2008	9,59	-	9,34	-	4,96	8,98	4,83	6,10	5,84
2nd half 2008	9,57	-	9,62	-	5,93	10,03	5,23	6,42	5,61
1st half 2009	10,02	-	10,09	-	5,98	8,46	5,63	6,57	6,86
2nd half 2009	10,07	-	9,88	-	5,83	9,03	5,72	6,64	6,12
1st half 2010	9,93	-	9,41	-	5,78	9,17	6,68	6,79	6,96
2nd half 2010	10,58	-	9,39	-	5,98	9,36	7,22	6,68	6,26
1st half 2011	11,21	-	9,71	-	5,84	9,66	7,18	7,33	7,42
2nd half 2011	11,39	-	10,20	-	5,93	9,02	7,27	7,23	7,00
1st half 2012	11,45	-	10,00	6,60	6,34	9,41	7,70	7,20	8,11
2nd half 2012	11,69	-	9,70	6,63	6,98	9,67	8,06	7,18	7,00
1st half 2013	12,78	-	9,32	6,47	7,01	10,01	9,05	7,12	8,34
2nd half 2013	12,73	-	10,00	6,57	6,30	9,72	8,98	7,17	7,43
1st half 2014	13,76	-	9,58	6,65	6,79	9,36	8,40	6,97	8,45
2nd half 2014	13,26	-	9,73	6,55	6,81	9,63	8,51	7,01	8,07
1st half 2015	13,16	-	9,56	6,52	6,20	8,98	8,19	6,63	8,95
2nd half 2015	13,00	-	9,72	6,48	7,00	8,97	8,88	6,81	8,47
1st half 2016	12,85	-	9,47	6,28	7,64	9,41	8,08	6,50	7,90
2nd half 2016	12,62	-	9,79	6,07	7,01	9,09	8,06	6,67	7,56
1st half 2017	12,68	-	9,15	5,90	6,81	8,26	7,74	6,38	7,84
2nd half 2017	12,70	-	9,10	6,02	7,05	8,30	7,55	6,51	7,41
1st half 2018	12,20	-	8,88	6,18	7,46	7,95	7,49	6,50	7,73
2nd half 2018	12,44	-	9,54	6,24	7,66	7,69	7,95	6,79	7,24
1st half 2019	13,10	10,40e	9,88	6,59	8,17	6,98	8,10	6,74	8,35
2nd half 2019	13,61	-	9,89	6,79	8,26	6,70	8,18	6,76	7,89
1st half 2020	15,09	10,37	9,88	7,00	7,81	6,31	7,39	6,51	8,51
2nd half 2020	15,34	10,36	9,95	7,01	7,89	7,04	7,67	7,21	8,07
1st half 2021	15,01	-	10,10	6,85	9,03	7,87	8,45	6,37	8,70
2nd half 2021	16,42	-	11,61	6,96	14,73	11,79	12,69	7,82	8,82
1st half 2022	19,25	-	16,01	7,64	16,57	15,35	15,5	8,7	12,58

reference period	Georgia	Greece	Ireland	Iceland	Italy	Croatia	Latvia	Liechtenstein	Lithuania
1st half 2008	-	7,37	12,01	-	12,48	6,19	5,86	-	7,01
2nd half 2008	-	7,98	12,76	-	14,21	8,08	7,12	-	7,04
1st half 2009	-	8,29	10,70	-	13,33	7,31	8,49	-	7,81
2nd half 2009	-	8,11	9,71	-	12,24	7,81	8,35	-	6,66
1st half 2010	-	8,25	8,38	-	12,09	8,00	8,26	-	9,17
2nd half 2010	-	8,95	8,66	-	12,98	7,77	8,50	-	10,23
1st half 2011	-	8,85	8,73	-	12,95	7,75	9,05	-	10,21
2nd half 2011	-	9,20	9,77	-	13,93	7,62	9,89	-	10,26
1st half 2012	-	10,22	10,38	-	16,29	7,56	9,90	-	10,75
2nd half 2012	-	10,59	11,96	-	16,78	8,03	10,00	-	10,74
1st half 2013	-	10,68	11,59	-	15,37	8,11	10,44	-	11,88
2nd half 2013	-	10,70	11,64	-	15,91	7,99	10,65	-	11,34
1st half 2014	-	10,88	11,58	-	15,23	8,15	10,75	-	11,64
2nd half 2014	-	10,64	11,36	-	15,91	7,82	10,68	-	11,70
1st half 2015	-	10,02	11,64	-	14,89	7,91	10,81	-	9,06
2nd half 2015	-	8,97	11,15	-	14,85	8,05	10,72	-	9,03
1st half 2016	-	9,29	10,18	5,81	14,06	7,78	10,74	-	8,36
2nd half 2016	-	8,62	10,19	4,66	14,35	7,68	10,72	-	7,91
1st half 2017	-	9,02	10,32	5,73p	13,44	7,61	10,33	0,00	7,49
2nd half 2017	-	9,99	10,06	-	13,24	8,07	10,27	-	7,44
1st half 2018	4,48	8,73	10,81	6,72e	11,90	8,69	8,64	-	7,58
2nd half 2018	5,13	8,85	11,08	4,44	12,16	8,96	9,04	-	8,08
1st half 2019	5,35	9,26	10,61	4,68	14,17	9,31	9,15	-	8,45
2nd half 2019	4,27	9,50	10,36	4,67	13,99	9,52	9,22	-	8,44
1st half 2020	4,57	9,39	10,18	4,99e	12,80	9,50	8,45	-	8,02
2nd half 2020	3,96	9,01	10,62	4,93	13,09	9,39	8,88	-	8,95
1st half 2021	6,99	10,29	12,15	4,88e	13,40	9,25	8,61	-	9,23
2nd half 2021	6,22	19,27	16,76	5,77	16,07	10,18	12,37	-	12,62
1st half 2022	7,56	27,13	19,49	-	23,44	13,28	12,82	-	14,36

5.8.3 Electricity

Supply to the industry, annual consumption 2.000 MWh to under 20.000 MWh

Cents/kWh, including excise duties, excluding value added tax

reference period	Luxembourg	Malta	Macedonia	Moldova	Montenegro	Netherlands	Norway	Austria	Poland
1st half 2008	-	9,18	-	-	-	9,03	6,57	9,26	8,34
2nd half 2008	-	13,23	-	-	-	9,15	6,78	9,65	7,94
1st half 2009	9,35	12,30	-	-	-	9,88	6,87	10,86	8,05
2nd half 2009	9,36	8,60	-	-	-	9,73	6,72	10,81	8,42
1st half 2010	7,81	14,90	-	-	-	8,90	8,87	10,32	8,53
2nd half 2010	7,95	16,00	-	-	-	8,91	7,90	10,32	8,59
1st half 2011	7,31	15,80	-	-	4,94	8,68	9,60	10,12	8,62
2nd half 2011	7,32	15,70	-	-	4,92	8,72	7,62	10,14	7,89
1st half 2012	7,34	15,90	-	-	5,39	8,49	7,43	9,83	8,14
2nd half 2012	7,90	15,80	-	-	5,90	8,67	6,96	9,85	8,45
1st half 2013	7,46	15,90	7,64	-	6,25	8,83	7,89	9,84	7,96
2nd half 2013	7,23	15,50	6,98	-	6,18	8,65	7,13	9,80	7,53
1st half 2014	6,55	15,70	6,43	-	6,35	8,44	6,45	9,60	7,04
2nd half 2014	6,73	15,80	6,33	-	6,17	8,22	6,54	9,37	7,13
1st half 2015	6,39	14,12	6,74	6,96	6,15	8,17	6,19	8,97	7,68
2nd half 2015	5,84	12,39	6,54	7,46	6,18	7,97	5,43	9,09	7,52
1st half 2016	5,39	12,21	6,40	7,69	6,39	7,74	6,14	8,57	7,17
2nd half 2016	5,44	12,33	5,96	7,11	6,46	7,66	6,82	7,95	7,10
1st half 2017	6,51	12,03	5,20	7,55	6,49	7,74	5,91	8,14	7,62
2nd half 2017	6,62	11,99	5,53	7,94	-	7,58	5,84	8,43	7,56
1st half 2018	6,74	11,98	6,09	8,26	6,54	7,79	6,61	8,46	7,77
2nd half 2018	6,86	11,95	6,44	7,34	6,43	7,97	7,54	8,84	7,81
1st half 2019	7,16	11,90	6,92	7,09	7,20	8,67	7,14	9,48	9,25
2nd half 2019	7,34	11,85	7,35	7,59	7,38	8,59	6,40	9,58	7,67
1st half 2020	5,54	11,83	7,45	7,68	7,19	9,76	4,09	9,64	9,81
2nd half 2020	7,58	11,84	6,96	7,01	6,75	9,84	3,77	10,32	9,62
1st half 2021	7,55	11,86	6,76	6,05	7,14	10,58	6,91	10,79	9,58
2nd half 2021	8,26	12,25	9,78	6,08	-	12,74	10,96	11,95	9,92
1st half 2022	12,02	12,34	16,73	7,54	7,42	17,38	13,54	17,40	14,62

reference period	Portugal	Romania	Serbia	Sweden	Slovakia	Slovenia	Spain	Czech Republic	Turkey
1st half 2008	8,07	7,83	-	6,20	10,83	7,67	8,38	9,25	6,43
2nd half 2008	8,17	7,99	-	6,86	11,70	8,03	8,91	9,39	7,96
1st half 2009	8,44	7,34	-	5,91	12,70	8,10	9,53	9,40	7,24
2nd half 2009	8,27	7,14	-	6,01	12,63	7,98	9,34	9,78	7,21
1st half 2010	8,01	7,16	-	7,18	10,58	8,46	9,27	9,40	8,24
2nd half 2010	8,05	6,94	-	7,36	10,86	8,65	8,97	9,69	8,44
1st half 2011	9,03	7,03	-	7,89	11,56	8,49	9,16	9,96	6,99
2nd half 2011	9,27	7,03	-	7,08	11,76	8,44	9,37	9,67	6,80
1st half 2012	10,55	7,30	-	7,13	12,18	8,41	10,15	9,69	7,68
2nd half 2012	10,40	6,70	-	6,73	11,59	8,45	10,03	9,72	8,71
1st half 2013	10,41	7,61	4,91	6,90	11,83	8,64	10,46	9,72	8,86
2nd half 2013	10,25	7,06	5,08	6,72	11,49	8,42	10,80	9,55	7,59
1st half 2014	10,10	7,87	4,61	6,35	10,37	7,64	10,39	7,85	6,89
2nd half 2014	10,09	7,30	6,02	5,98	10,53	7,55	10,29	7,71	7,26
1st half 2015	10,32	7,48	5,62	5,45	10,10	7,23	9,68	7,18	7,88
2nd half 2015	10,39	7,18	6,22	5,15	9,86	7,53	9,55	7,20	6,96
1st half 2016	10,20	6,83	6,04	5,31	9,68	7,12	9,02	6,39	6,68
2nd half 2016	10,27	7,21	4,56	5,57	9,97	7,17	8,63	6,29	6,58
1st half 2017	10,31	7,13	5,81	5,53	10,37	6,71	8,81	6,20	5,85
2nd half 2017	10,43	7,30	6,17	5,56	10,43	6,75	8,59	6,30	5,68
1st half 2018	10,48	7,72	6,41	5,66	10,98	7,18	9,92	6,38	5,51
2nd half 2018	10,90	8,12	6,56	6,16	10,87	7,31	9,50	6,36	5,98
1st half 2019	10,12	9,06	7,51	6,64	12,19	8,02	9,67	7,30	6,61
2nd half 2019	10,63	9,45	7,42	5,96	12,47	8,12	9,28	7,55	8,01
1st half 2020	10,23	9,99	7,46	5,63 _e	12,13	8,59	8,41	8,12	7,17
2nd half 2020	10,10	9,53	7,34	5,42	12,67	8,54	8,40	8,17	5,84
1st half 2021	9,73	9,19	7,38	6,05 _e	11,77	8,09	8,77	8,82	6,15
2nd half 2021	11,93	12,94	7,92	8,84	12,92	10,02	15,28	9,92	7,40
1st half 2022	13,26	24,72	9,23	9,78	21,44	15,02	19,02	16,48	11,46

5.8.3 Electricity

Supply to the industry, annual consumption 2.000 MWh to under 20.000 MWh

Cents/kWh, including excise duties, excluding value added tax

reference period	Ukraine	Hungary	United Kingdom	Cyprus	Kosovo
1st half 2008	-	9,99	8,80	13,17	-
2nd half 2008	-	10,88	10,10	17,16	-
1st half 2009	-	11,03	10,18	10,83	-
2nd half 2009	-	11,46	9,00	13,62	-
1st half 2010	-	9,42	8,74	14,00	-
2nd half 2010	-	9,41	8,87	16,20	-
1st half 2011	-	9,38	8,93	15,15	-
2nd half 2011	-	9,35	9,30	19,73	-
1st half 2012	-	9,16	10,33	20,94	-
2nd half 2012	-	9,65	10,88	22,10	-
1st half 2013	-	9,37	10,61	19,52	6,89
2nd half 2013	-	9,61	11,03	18,97	6,81
1st half 2014	-	8,89	11,73	16,37	6,83
2nd half 2014	-	8,75	12,14	17,42	7,06
1st half 2015	-	8,52	13,71	12,56	7,18
2nd half 2015	-	8,54	13,95	12,44	7,31
1st half 2016	4,88	7,63	12,68	9,12	7,06
2nd half 2016	5,83	7,49	11,79	12,07	7,02
1st half 2017	5,45	7,28 ^{ee}	12,07	12,95	7,60
2nd half 2017	5,08	7,40	11,85	13,39	6,82
1st half 2018	5,80	7,68	12,71	13,35	6,63
2nd half 2018	6,02	7,60	13,36	17,20	6,47
1st half 2019	6,34	9,04	14,07	15,53	6,11
2nd half 2019	6,93	8,69	14,56	17,26	6,12
1st half 2020	5,75	9,08	15,21	14,11	6,16
2nd half 2020	5,37	8,87	-	13,17	6,15
1st half 2021	5,86	8,53	-	14,83	6,14
2nd half 2021	-	10,11	-	19,13	6,12
1st half 2022	-	16,01	-	24,05	6,09

Source: Eurostat, Energy Statistics - prices (New methodology from 2007 onwards)

5.9 Remote heat

reporting year	reporting month												yearly average
	Jan	Feb	Mar	Apr	May	Jun	Jul	Aug	Sep	Oct	Nov	Dec	
Producer price index													
2015 = 100													
GP09-353 Remote heat with steam and hot water (Supply to multi-dwelling building or non-residential building)													
2005 ...	66,6	66,7	66,8	67,9	68,2	68,3	69,2	69,2	69,3	70,9	71,1	71,1	68,8
2006 ...	74,6	75,1	75,6	76,8	77,3	77,4	77,5	77,8	77,9	79,6	80,4	80,4	77,5
2007 ...	82,7	83,4	83,6	82,9	82,7	82,6	82,0	81,8	81,6	81,9	81,7	81,6	82,4
2008 ...	82,9	83,0	82,9	84,6	85,2	85,3	87,2	87,6	88,5	92,8	93,7	93,7	87,3
2009 ...	96,5	97,3	97,0	94,3	93,4	93,1	90,9	90,4	90,4	88,4	88,0	87,5	92,3
2010 ...	86,8	86,0	86,0	86,0	85,5	85,5	86,1	86,1	86,2	87,7	88,2	88,2	86,5
2011 ...	89,1	89,8	89,8	90,7	91,0	91,2	93,0	93,3	93,7	96,3	96,8	96,9	92,6
2012 ...	98,2	98,8	99,0	99,7	100,0	100,2	100,7	100,9	101,3	102,6	102,7	102,6	100,6
2013 ...	103,4	103,6	103,6	103,9	103,9	103,8	103,7	103,7	103,7	103,3	103,3	103,3	103,6
2014 ...	103,3	103,3	103,3	103,1	102,8	102,8	102,5	102,4	102,3	102,3	102,3	102,2	102,7
2015 ...	101,7	101,5	101,4	100,4	100,4	100,4	99,4	99,4	99,4	98,7	98,7	98,7	100,0
2016 ...	97,3	97,0	97,0	95,1	95,0	95,0	93,7	93,3	93,3	92,3	92,2	92,2	94,5
2017 ...	90,9	91,0	90,8	91,3	91,3	91,3	91,7	91,7	91,8	91,9	91,9	91,8	91,5
2018 ...	92,4	92,4	92,4	93,0	93,1	93,1	93,5	93,7	93,8	94,7	94,9	94,9	93,5
2019 ...	96,6	97,0	97,2	97,9	98,2	98,3	98,1	98,3	98,3	98,1	98,1	98,1	97,9
2020 ...	98,2	98,2	98,3	97,9	97,8	97,8	97,5	97,4	97,4	96,2	96,0	96,3	97,4
2021 ...	95,2	95,4	95,5	95,9	95,9	95,8	96,9	97,2	97,5	100,2	101,5	101,5	97,4
2022 ...	109,2	110,4	111,7	119,0	119,8	122,5	131,1	133,3	133,7				
2023 ...													
Consumer price index													
2015 = 100													
CC13-0455002200 District heating													
2005 ...	67,4	67,5	67,6	68,8	69,1	69,2	70,2	70,2	70,3	71,7	71,9	72,0	69,7
2006 ...	75,2	75,7	76,1	77,4	77,9	78,0	78,1	78,5	78,5	80,4	81,1	81,1	78,2
2007 ...	83,3	84,0	84,3	83,8	83,6	83,4	82,8	82,7	82,6	82,7	82,6	82,5	83,2
2008 ...	83,8	83,8	83,8	85,5	86,0	86,1	88,3	88,5	89,4	93,7	94,5	94,5	88,2
2009 ...	97,4	98,1	97,9	95,1	94,3	94,1	91,6	91,2	91,2	89,2	88,7	88,1	93,1
2010 ...	87,4	86,6	86,6	86,6	85,8	85,8	86,5	86,5	86,5	87,9	88,5	88,1	86,9
2011 ...	88,6	89,3	89,4	90,2	90,4	90,8	92,5	92,9	93,2	95,8	96,4	96,4	92,2
2012 ...	98,0	98,5	98,6	99,4	99,6	100,0	100,6	100,7	100,9	102,1	102,1	102,1	100,2
2013 ...	103,0	103,2	103,2	103,4	103,4	103,3	103,6	103,6	103,6	103,3	103,3	103,3	103,4
2014 ...	103,3	103,3	103,2	103,0	102,9	102,9	102,5	102,5	102,4	102,2	102,2	102,2	102,7
2015 ...	101,7	101,5	101,4	100,4	100,3	100,3	99,5	99,5	99,5	98,6	98,6	98,6	100,0
2016 ...	97,6	97,3	97,3	95,9	95,8	95,8	94,5	94,2	94,2	93,2	93,1	93,0	95,2
2017 ...	91,7	91,6	91,5	92,0	92,0	92,0	92,6	92,6	92,6	92,7	92,7	92,7	92,2
2018 ...	93,0	93,0	92,9	93,3	93,4	93,4	93,9	94,1	94,1	95,2	95,2	95,2	93,9
2019 ...	96,9	97,3	97,5	98,2	98,5	98,6	98,4	98,5	98,5	98,3	98,3	98,3	98,1
2020 ...	98,5	98,5	98,6	98,2	98,1	98,1	95,4	95,3	95,3	94,1	93,9	94,2	96,5
2021 ...	95,6	95,8	95,9	96,1	96,1	96,1	97,2	97,5	97,6	100,4	101,6	101,6	97,6
2022 ...	109,1	110,5	111,6	118,7	119,5	121,9	130,6	132,6	133,0				
2023 ...													

5.10 Wood products

reporting year	reporting month												yearly average
	Jan	Feb	Mar	Apr	May	Jun	Jul	Aug	Sep	Oct	Nov	Dec	
Wood products for energy production ¹													
2015 = 100													
2005 ...	-	-	-	-	-	-	-	-	-	-	-	-	-
2006 ...	-	-	-	-	-	-	-	-	-	-	-	-	-
2007 ...	-	-	-	-	-	-	-	-	-	-	-	-	-
2008 ...	-	-	-	-	-	-	-	-	-	-	-	-	-
2009 ...	-	-	-	-	-	-	-	-	-	-	-	-	-
2010 ...	-	-	-	-	-	-	-	-	-	-	-	-	-
2011 ...	-	-	-	-	-	-	-	-	-	-	-	-	-
2012 ...	-	-	-	-	-	-	-	-	-	-	-	-	-
2013 ...	-	-	-	-	-	-	-	-	-	-	-	-	-
2014 ...	-	-	-	-	-	-	-	-	-	-	-	-	-
2015 ...	102,8	103,1	103,2	101,4	99,4	99,2	96,8	98,4	98,2	98,7	99,4	99,3	100,0
2016 ...	98,8	97,9	97,8	96,0	93,6	91,7	91,4	91,7	91,0	91,7	92,1	91,6	93,8
2017 ...	92,3	91,0	92,1	91,9	91,8	91,3	89,6	89,7	90,3	90,0	90,7	91,7	91,0
2018 ...	91,7	91,8	93,3	92,7	92,7	91,7	91,3	91,5	91,4	92,2	93,2	93,2	92,2
2019 ...	93,1	93,6	94,4	91,6	89,0	88,0	87,0	86,9	86,6	86,3	86,2	86,0	89,1
2020 ...	84,5	84,0	83,6	82,7	80,2	80,8r	78,0	77,6	77,2	76,1	75,5	75,7	79,7
2021 ...	76,1	75,5	75,7	76,1	75,5	75,5	77,7	80,7	82,0	84,8	87,8	91,3	79,9
2022 ...	104,1 r	109,5 r	113,3	116,7	121,2	124,2	133,6	145,2					
2023 ...													
Producer price index (domestic market)													
2015 = 100													
GP09-1610 23 Wood in chips or particles (without forest wood chips)													
2005 ...	55,3	55,1	54,8	56,7	56,8	56,8	57,5	57,8	57,9	58,4	58,4	57,9	57,0
2006 ...	57,6	59,7	59,0	62,2	66,2	67,8	70,1	73,1	76,6	78,0	86,9	90,9	70,7
2007 ...	92,7	101,7	100,3	100,8	89,7	89,5	86,9	85,8	85,8	84,7	84,3	83,8	90,5
2008 ...	83,8	91,8	90,2	89,2	82,7	83,1	85,5	86,6	86,3	86,5	87,9	87,7	86,8
2009 ...	85,8	83,5	83,5	83,0	83,9	82,2	83,2	82,7	80,8	85,3	84,8	84,3	83,6
2010 ...	90,0	90,4	93,3	96,3	102,4	102,4	102,4	103,4	103,4	106,1	105,0	106,1	100,1
2011 ...	106,5	108,3	108,3	106,7	106,7	106,7	105,3	105,3	105,3	104,7	106,0	106,7	106,4
2012 ...	106,7	106,7	107,0	107,2	103,6	103,6	101,2	101,2	101,2	100,2	105,3	105,3	104,1
2013 ...	108,1	108,1	108,1	109,3	109,3	109,3	111,0	112,9	112,9	113,6	117,3	117,4	111,4
2014 ...	115,8	115,8	114,4	109,4	99,6	99,1	96,9	96,5	96,4	97,5	98,5	98,1	103,2
2015 ...	100,4	101,2	101,5	100,2	100,0	100,0	100,0	100,0	99,7	99,4	98,7	98,7	100,0
2016 ...	100,2	100,0	99,7	94,6	91,2	91,2	90,0	89,7	89,5	89,1	89,0	89,0	92,8
2017 ...	89,4	89,9	89,9	90,9	90,9	91,4	91,4	91,5	91,3	91,4	91,4	91,4	90,9
2018 ...	90,9	91,5	92,0	92,7	92,5	92,8	93,8	94,9	95,1	94,9	95,0	94,7	93,4
2019 ...	93,8	92,7	93,3	90,1	87,7	87,4	87,4	89,3	88,7	87,0	86,0	84,6	89,0
2020 ...	82,2	80,2	80,2	79,2	77,9	78,2	74,1	71,5	70,3	68,1	67,0	66,8	74,6
2021 ...	62,7	60,3	60,5	60,8	60,3	59,7	58,8	60,1	60,0	65,4	69,4	69,6	62,3
2022 ...	96,6	102,0	108,3	109,8	113,5	113,9	131,5	140,2	146,7				
2023 ...													
GP09-1629 14 908 Pellets, briquettes, logs or similar forms made of wood shavings and other sawing by-products													
2005 ...	49,3	48,9	49,0	49,4	48,7	48,7	48,7	48,4	49,3	49,0	49,1	48,9	49,0
2006 ...	48,4	48,0	49,2	49,3	50,6	53,1	53,2	54,2	55,4	59,6	60,9	64,1	53,8
2007 ...	67,8	78,2	80,7	80,3	76,8	75,9	73,8	73,1	73,4	73,2	75,1	75,4	75,3
2008 ...	74,0	74,5	73,2	72,3	72,0	73,2	71,6	72,2	72,3	74,1	75,6	77,9	73,6
2009 ...	83,3	85,2	85,9	83,7	82,8	80,6	81,8	84,7	87,1	88,6	88,8	88,3	85,1
2010 ...	88,2	88,2	89,6	87,7	86,6	85,5	85,6	88,7	90,2	90,8	91,4	93,0	88,8
2011 ...	95,5	98,0	97,3	97,3	97,1	94,6	93,0	93,0	93,7	97,0	97,0	97,2	95,9
2012 ...	97,2	98,3	98,5	95,1	93,8	92,5	92,8	93,2	94,2	98,3	103,2	104,7	96,8
2013 ...	109,9	109,4	110,3	110,8	109,3	108,0	110,9	113,5	115,1	120,0	120,8	120,7	113,2
2014 ...	122,3	120,4	117,6	111,8	105,8	104,8	105,1	104,3	105,3	105,6	107,0	107,1	109,8
2015 ...	107,6	106,4	106,0	103,2	98,0	97,2	96,2	96,2	96,3	97,0	97,5	98,4	100,0
2016 ...	98,6	98,2	97,6	96,6	94,4	93,8	92,5	92,8	93,1	93,5	94,2	95,5	95,1
2017 ...	96,9	98,6	99,6	98,8	98,4	96,8	96,1	96,1	96,2	97,0	97,6	98,7	97,6
2018 ...	100,5	101,8	102,2	101,9	99,8	98,2	97,6	97,7	97,6	99,4	101,7	103,3	100,1
2019 ...	105,1	106,7	106,9	104,6	100,8	99,2	97,9	98,0	96,6	97,2	99,8	100,8	101,1
2020 ...	100,7	101,3	99,2	97,4	93,4	93,5	91,7	93,1	92,8	92,2	91,9	91,9	94,9
2021 ...	93,0	91,6	91,9	91,2	90,2	90,1	95,7	103,3	106,1	109,5	113,9	121,3	99,8
2022 ...	135,8	145,2	147,1	155,5	165,4	174,7	189,8	215,1	259,2				
2023 ...													

5.10 Wood products

reporting year	reporting month												yearly average
	Jan	Feb	Mar	Apr	May	Jun	Jul	Aug	Sep	Oct	Nov	Dec	
Index of producer prices for products of logging products¹													
2015=100													
Industrial timber													
2005 ...	-	-	-	-	-	-	-	-	-	-	-	-	-
2006 ...	-	-	-	-	-	-	-	-	-	-	-	-	-
2007 ...	-	-	-	-	-	-	-	-	-	-	-	-	-
2008 ...	-	-	-	-	-	-	-	-	-	-	-	-	-
2009 ...	-	-	-	-	-	-	-	-	-	-	-	-	-
2010 ...	-	-	-	-	-	-	-	-	-	-	-	-	-
2011 ...	-	-	-	-	-	-	-	-	-	-	-	-	-
2012 ...	-	-	-	-	-	-	-	-	-	-	-	-	-
2013 ...	-	-	-	-	-	-	-	-	-	-	-	-	-
2014 ...	-	-	-	-	-	-	-	-	-	-	-	-	-
2015 ...	100,8	102,3	102,5	100,6	99,2	100,7	97,7	100,8	100,0	97,8	98,9	98,7	100,0
2016 ...	98,3	96,0	96,5	97,5	95,5	91,7	91,3	92,5	90,5	92,8	91,2	88,6	93,5
2017 ...	88,8	85,4	87,6	86,7	86,5	86,1	84,0	84,2	84,4	83,2	84,4	85,9	85,6
2018 ...	86,8	85,9	88,4	87,7	89,0	87,6	86,9	86,6	86,1	85,8	87,2	85,1	86,9
2019 ...	84,0	85,8	87,6	83,5	81,6	79,7	78,2	76,5	76,9	75,5	74,1	73,8	79,8
2020 ...	73,0	72,3	73,1	72,3	70,4r	71,4r	67,8	66,2	65,7	66,1	66,1	66,9	69,3
2021 ...	69,1	69,9	69,9	71,7	71,6	72,0	74,4	76,3	76,8	77,0	78,9	83,3	74,3
2022 ...	86,3 r	89,0 r	93,5	95,8	98,4	98,5	97,8	100,2					
2023 ...													

Index of producer prices for products of logging products¹													
2015 = 100													
Energy wood													
2005 ...	-	-	-	-	-	-	-	-	-	-	-	-	-
2006 ...	-	-	-	-	-	-	-	-	-	-	-	-	-
2007 ...	-	-	-	-	-	-	-	-	-	-	-	-	-
2008 ...	-	-	-	-	-	-	-	-	-	-	-	-	-
2009 ...	-	-	-	-	-	-	-	-	-	-	-	-	-
2010 ...	-	-	-	-	-	-	-	-	-	-	-	-	-
2011 ...	-	-	-	-	-	-	-	-	-	-	-	-	-
2012 ...	-	-	-	-	-	-	-	-	-	-	-	-	-
2013 ...	-	-	-	-	-	-	-	-	-	-	-	-	-
2014 ...	-	-	-	-	-	-	-	-	-	-	-	-	-
2015 ...	102,1	102,1	102,3	102,3	101,6	98,5	88,4	93,4	94,9	103,8	106,6	104,1	100,0
2016 ...	97,1	97,6	97,2	94,1	92,2	87,9	92,1	91,9	90,7	90,7	96,2	95,8	93,7
2017 ...	97,3	90,2	91,2	91,3	92,4	92,0	84,9	84,7	89,1	88,3	89,1	91,3	90,2
2018 ...	85,3	84,2	88,1	84,5	86,2	84,7	82,5	82,2	82,4	85,9	85,2	87,3	84,9
2019 ...	86,6	84,8	85,0	85,2	83,7	84,7	83,6	82,2	83,2	87,1	86,1	86,1	84,9
2020 ...	81,8	82,5	81,8	82,8	80,0	81,2	81,3	84,3	86,2	82,0	80,5	80,5	82,1
2021 ...	84,8	86,5	86,6	86,8	85,3	86,0	86,7	85,2	88,0	90,3	90,6	90,4	87,3
2022 ...	92,4 r	95,5 r	96,4	95,3	93,8	95,4	99,6	109,3					
2023 ...													

¹ The Index of producer prices for products of logging products is released 6 weeks after the respective reporting month. That's the reason why wood products for energy production are published with 1 month time lag.

Annex 6 Overview of tax rates by energy types

	Natural gas as a heating fuel	Petrol	Diesel fuel	Light heating oil ¹		Heavy heating oil	Electricity	
							Standard tax rate	Industry, agriculture, forestry
							EUR/MWh	EUR/MWh
	EUR/MWh	Cents/litre	Cents/litre	EUR/1 000 litres		EUR/1 000 kg	EUR/MWh	EUR/MWh
				>50 mg	≤50 mg			
Jan 00	3,48	56,24	37,84	61,35		17,89	12,78	2,56
Jan 01	3,48	59,31	40,90	61,35		17,89	15,34	3,07
Jan 02	3,48	62,38	43,97	61,35		17,89	17,90	3,60
Jan 03	5,50	65,45	47,04	61,35		25,00	20,50	12,30
Jan 09	5,50	65,45	47,04	76,35	61,35	25,00	20,50	12,30
Jan 11	5,50	65,45	47,04	76,35	61,35	25,00	20,50	15,37 ¹

¹ Tax reduction granted as tax relief

Source: Federal Ministry of Finance

Annex 7 Links to external data sources

The following sources are a selection of internet publications on energy prices. Depending on the energy type, links to general information sources and to concrete data are listed.

Cross-section information

Federal Ministry of Economics and Technology

↳ www.bmwi.de → Energie → Statistiken und Prognosen

Working Group on Energy Balances

↳ www.ag-energiebilanzen.de → Daten

Hard coal and lignite

General information

Statistics of the Coal Industry

↳ www.kohlenstatistik.de

Federal Ministry of Economics and Technology

↳ www.bmwi.de → Energie → Energieträger → Kohle

Federal Office of Economics and Export Control

↳ www.bafa.de → Energie → Steinkohle

Data

Statistics of the Coal Industry

↳ www.kohlenstatistik.de → Zum Download → Entwicklung ausgewählter Energiepreise
Prices (€/tce) for third-country coal (power station coal and coking coal), lignite briquettes and pulverised lignite

Federal Office of Economics and Export Control

↳ www.bafa.de → Energie → Steinkohle → Drittlandskohlepreis
Prices (€/tce) free German border for power station coal

Mineral oil

General information

Association of the German Petroleum Industry

↳ www.mwv.de

Federal Office of Economics and Export Control

↳ www.bafa.de → Energie → Rohöl / Mineralöl

Data

Association of the German Petroleum Industry

↳ www.mwv.de → Daten / Statistiken → Statistiken / Infoportal
Crude oil prices in \$/b for OPEC basket, UK Brent, West Texas Intermediate and UAE Dubai

Natural gas

General information

Federal Association of the German Gas and Water Industry

↳ www.bdew.de → Energie

Federal Office of Economics and Export Control

↳ www.bafa.de → Energie → Erdgas

Data

Federal Office of Economics and Export Control

↳ www.bafa.de → Energie → Erdgas → EnergieINFO
Monthly development of the price free at border (€/TJ) for natural gas

Eurostat

↳ <http://epp.eurostat.ec.europa.eu>

Statistics Database → Database by Themes → Environment and Energy → Energy → Energy statistics prices

- for household customers
- for industrial customers

Mineral oil products (petrol, Diesel fuel, light heating oil, heavy heating oil, liquefied gas)

General information

Association of the German Petroleum Industry

↳ www.mwv.de

Deutscher Verband Flüssiggas e.V.

↳ www.dvfg.de

Federal Office of Economics and Export Control

↳ www.bafa.de → Energie → Rohöl / Mineralöl

Data

Federal Statistical Office

↳ www.destatis.de → Publikationen → Thematische Veröffentlichungen → Preise → Erzeugerpreise gewerbl. Produkte
Fachserie 17, Reihe 2 (Prices and price indices for industrial products)

Average producer prices of

- supergrade petrol (€/hl) when delivered to wholesalers
- Diesel fuel (€/hl) when delivered to wholesalers and large consumers
- Light heating oil (€/hl) when delivered to wholesalers and to consumers by market places
- Heavy heating oil (€/t) when delivered to commercial consumers or from refinery

Association of the German Petroleum Industry

↳ www.mwv.de → Daten / Statistiken → Statistiken / Preise

Average consumer prices (Ct/l) and their composition for

- regular petrol
- supergrade petrol
- Diesel fuel
- Light heating oil

Electricity

General information

Federal Association of the German Gas and Water Industry

↳ www.bdew.de → Energie

Association of the Industrial Energy and Power Industry

↳ www.vik.de

Association of Energy Consumers:

↳ <http://www.energieverbraucher.de>

Working Group on Energy Balances:

↳ www.ag-energiebilanzen.de → Daten

Data

Eurostat

↳ <http://epp.eurostat.ec.europa.eu> → Statistiken → Energie → Haupttabellen → Energiestatistik-Preise
Semi-annual (01.01. and 01.07.) regional electricity prices (€/kWh)

- for household customers
- for industrial customers

European Energy Exchange (Energiebörse Leipzig)

↳ www.eex.de

- Electricity price quotations (€/MWh) on the spot and forward markets
- Quotations of CO2 emission certificates (€/EUA)

Remote heat

General information

Remote Heat Research Institute:

↳ www.fernwaerme.de

Working Group on Heat and Heating Power Industry:

↳ www.agfw.de

Daten

Working Group on Energy Balances:

↳ www.ag-energiebilanzen.de → Daten

Index der Erzeugerpreise gewerblicher Produkte (Inlandsabsatz) - Basis 2015 = 100

Überblick über die Auswirkungen der nationalen CO2-Bepreisung auf die Subindizes ab Januar 2021

GP-Nr. Ausgabe 2009, Version 2012	FS 17 R2 Lfd Nr	Erzeugnis	Wägung	CO2-Bepreisung (national)
06	15	Erdöl und Erdgas	.	nicht enthalten
061		Erdöl	.	nicht enthalten
0610		Erdöl	.	nicht enthalten
0610 1	16	Erdöl und Öl aus bituminösen Mineralien, roh	.	nicht enthalten
0610 10		Erdöl und Öl aus bituminösen Mineralien, roh	.	nicht enthalten
0610 10 300		Rohöl (natürl. vorkommendes Mineralöl, bestehend aus zahlreichen Kohlenwasserstoffen, einschl. Öl aus Ölschiefer, Asphalt sand usw.)	.	nicht enthalten
062	17	Erdgas, verflüssigt oder gasförmig	.	nicht enthalten
0620		Erdgas, verflüssigt oder gasförmig	.	nicht enthalten
0620 1		Erdgas, verflüssigt oder gasförmig	.	nicht enthalten
0620 10		Erdgas, verflüssigt oder gasförmig	.	nicht enthalten
0620 10 000		Erdgas (methanreiches Verbrennungsgas aus Lagerstätten), verflüssigt oder gasförmig	.	nicht enthalten
192	172	Mineralöl erzeugnisse	.	je nach Anfall
1920		Mineralöl erzeugnisse	.	je nach Anfall
1920 2		Motorenreibstoffe, Heizöle u.a. Mineralöle	29,47	je nach Anfall
	173	Nachrichtlich: Kraftstoffe	23,54	je nach Anfall
1920 21	174	Motorenbenzin (einschl. Flugbenzin)	10,57	je nach Anfall
1920 21 000		Motorenbenzin (einschl. Flugbenzin)	10,57	je nach Anfall
1920 21 000 1		- an den Großhandel	8,03	je nach Anfall ¹
1920 21 000 2		- ab Tankstelle	2,54	enthalten
1920 23	175	Leichtöle, leichte Zubereitungen a.n.g.	0,81	je nach Anfall
1920 23 005		Leichtes Rohbenzin (leichtes Destillat für den Einsatz in d. erdölchemischen Industrie)	0,81	je nach Anfall
1920 25		Flugturbinenkraftstoff aus Leuchtöl (Kerosin)	0,82	je nach Anfall
1920 25 000		Flugturbinenkraftstoff aus Leuchtöl (Kerosin)	0,82	je nach Anfall
1920 26		Gasöl	15,12	je nach Anfall
1920 26 005	176	Dieselmotorkraftstoff (Erdöldestillat, 180°C - 380°C, für Straßen- und Schienenfahrzeuge)	12,97	je nach Anfall ¹
1920 26 005 1	177	Dieselmotorkraftstoff, Abgabe an Großhandel	3,94	je nach Anfall ¹
1920 26 005 2	178	Dieselmotorkraftstoff, Abgabe an Großverbraucher	0,78	enthalten
1920 26 005 3	179	Dieselmotorkraftstoff, ab Tankstelle	8,25	enthalten
		Heizöle	2,60	je nach Anfall
1920 26 007	180	Heizöl, leicht (Erdöldestillat, 180°C bis 380°C, zur Erzeugung von Wärme oder Dampf)	2,15	je nach Anfall
1920 26 007 1	181	Heizöl, leicht, Abgabe an Großhandel ²	2,02	je nach Anfall ¹
1920 26 007 2	182	Heizöl, leicht, Abgabe an Verbraucher ³	0,13	enthalten
1920 28		Heizöle a.n.g.	0,45	je nach Anfall
1920 28 005/007	183	Heizöl schwer, nicht als Raffinerie-Einsatzmaterial	0,45	je nach Anfall
1920 29	184	Schmieröle; Schweröle a.n.g.	1,70	nicht enthalten
1920 29 502		Motoren-, Kompressoren- und Turbinenöle	1,70	nicht enthalten
1920 3		Gasförmige Kohlenwasserstoffe (ohne Erdgas)	.	je nach Anfall
1920 31	185	Propan und Butane, verflüssigt	.	je nach Anfall
1920 31 001	186	Flüssiggas (LPG) (Gemisch aus leichten Kohlenwasserstoffen, durch erhöhten Druck in flüssigem Zustand erhalten, zur Verwendung als Kraft-/Brennstoff) (auch Propan, chem. rein)	.	je nach Anfall
1920 31 002		Flüssiggas (LPG) als Raffinerie-Einsatzmaterial (Propan/Butane für den Einsatz in Raffinerien) (auch Methan, chemisch rein); nichtenergetisches Flüssiggas (LPG) (Propan/Butane für den Einsatz in der erdölchemischen Industrie)	0,16	je nach Anfall
1920 32		Raffineriegas (z.B. Ethylen, Propylen, Butylen, Butadien, verflüssigt u.a. rohe gasförmige Kohlenwasserstoffe, ohne Erdgas)	0,34	je nach Anfall
1920 32 000		Raffineriegas (z.B. Ethylen, Propylen, Butylen, Butadien, verflüssigt u.a. rohe gasförmige Kohlenwasserstoffe, ohne Erdgas)	0,34	je nach Anfall
1920 4	187	Andere Mineralöl erzeugnisse	0,55	nicht enthalten
1920 42		Petrolkoks, Bitumen aus Erdöl u.a. Rückstände aus Erdöl oder Öl aus bituminösen Mineralien	0,55	nicht enthalten
1920 42 500	188	Bitumen aus Erdöl (Schwarzes oder dunkelbraunes festes oder halbfestes dicht- und haftfähiges thermoplastisches Material)	0,55	nicht enthalten
352	631	Erdgas (Verteilung)	84,38	je nach Anfall
3522		Dienstleistungen der Gasversorgung durch Rohrleitungen u. des Handels mit Gas	84,38	je nach Anfall
3522 2		Dienstleistungen der Gasversorgung durch Rohrleitungen u. des Handels mit Gas	84,38	je nach Anfall
3522 21	632	Erdgas, bei Abgabe an Haushalte	14,29	enthalten
3522 21 100		Erdgas, bei Abgabe an Haushalte	14,29	enthalten
3522 22	633	Erdgas, bei Abgabe an Handel und Gewerbe	5,74	enthalten
3522 22 100		Jahresabgabe 58 150 kWh	2,87	enthalten
3522 22 200		Jahresabgabe 116 300 kWh	2,87	enthalten
3522 23	634	Erdgas, bei Abgabe an die Industrie	10,40	je nach Anfall
3522 23 100	635	Jahresabgabe 1 163 MWh	0,83	enthalten
3522 23 200	636	Jahresabgabe 11 630 MWh	1,25	enthalten
3522 23 300	637	Jahresabgabe 116 300 MWh	1,56	je nach Anfall
3522 23 400	638	Jahresabgabe über 500 000 MWh	6,76	je nach Anfall
3522 24	639	Erdgas, bei Abgabe an Kraftwerke	2,38	je nach Anfall
3522 24 100		Erdgas, bei Abgabe an Kraftwerke	2,38	je nach Anfall
3522 27	640	Erdgas, bei Abgabe an Wiederverkäufer	51,48	nicht enthalten
3522 27 100		Erdgas, bei Abgabe an Wiederverkäufer	51,48	nicht enthalten
3522 28	641	Börsennotierung Erdgas	0,09	nicht enthalten
3522 28 100		Börsennotierung Erdgas	0,09	nicht enthalten
Nachrichtlich ab Januar 2021:				
3522 23 301	650	Erdgas, bei Abgabe an die Industrie, Jahresabgabe 116 300 MWh, ohne CO2-Abgabe	./.	nicht enthalten
3522 23 401	651	Erdgas, bei Abgabe an die Industrie, Jahresabgabe über 500 000 MWh, ohne CO2-Abgabe	./.	nicht enthalten
3522 24 101	652	Erdgas, bei Abgabe an Kraftwerke, ohne CO2-Abgabe	./.	nicht enthalten

1 Geändert am 16.02.2021: Bei der Abgabe von Motorenbenzin, Dieselmotorkraftstoff und leichtem Heizöl an den Großhandel kann in Abhängigkeit von den steuerlichen Voraussetzungen des beziehenden Großhändlers eine CO2 Bepreisung beim Verkauf anfallen.

2 Je nach Anfall einschließlich CO2-Bepreisung; eine für den Nachweis der Preisentwicklung ohne Berücksichtigung der CO2-Bepreisung ausreichende Datenbasis steht nicht zur Verfügung.

3 Einschließlich CO2-Bepreisung; eine für den Nachweis der Preisentwicklung ohne Berücksichtigung der CO2-Bepreisung ausreichende Datenbasis steht nicht zur Verfügung.